

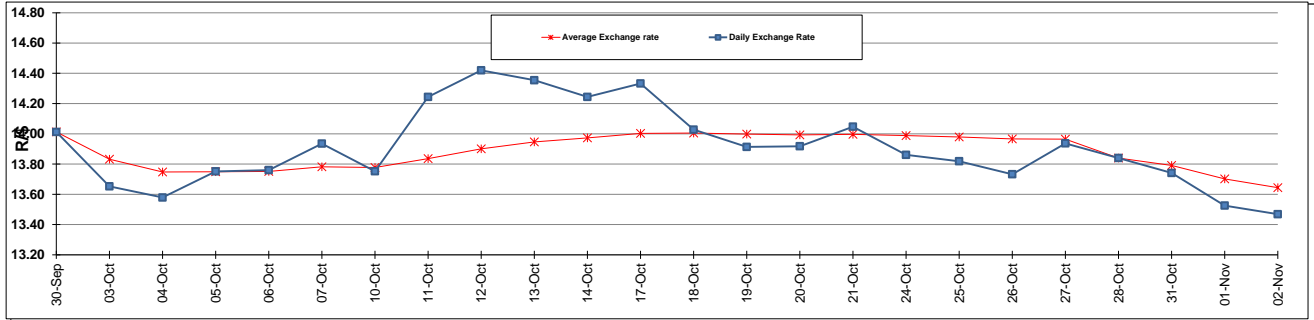
	PETROL 95 ULP	PETROL 93 ULP & LRP	DIESEL 0.05%	DIESEL 0.005%	ILL. PAR.
GAUTENG PUMP PRICE (SA c/l) AS FROM 02/11/2016	1 305.000	1 279.000	-	-	-
WHOLESALE PRICE (SA c/l) AS FROM 02/11/2016	-	-	1 134.870	1 138.270	726.628
SINGLE NATIONAL MAXIMUM RETAIL PRICE	-	-	-	-	934.000
BASIC FUEL PRICE - 02/11/2016 (SA c/l)	526.490	513.482	507.420	511.664	501.094
PRESS RELEASE CONTRIBUTION TO BFP 02/11/2016 - 02/11/2016 (SA c/l)	583.970	567.970	568.630	572.030	565.128
UNIT OVER/(UNDER) RECOVERY (SA c/l) - 02/11/2016	57.480	54.488	61.210	60.366	64.034
AVERAGE BASIC FUEL PRICE 28/10/2016 - 02/11/2016	549.694	534.326	533.828	538.145	529.057
AVERAGE UNIT OVER/(UNDER) RECOVERY 28/10/2016 - 02/11/2016	0.526	(0.106)	(12.448)	(13.365)	(6.679)

### ANALYSIS MOVEMENT OF AVERAGE OVER/(UNDER) RECOVERY

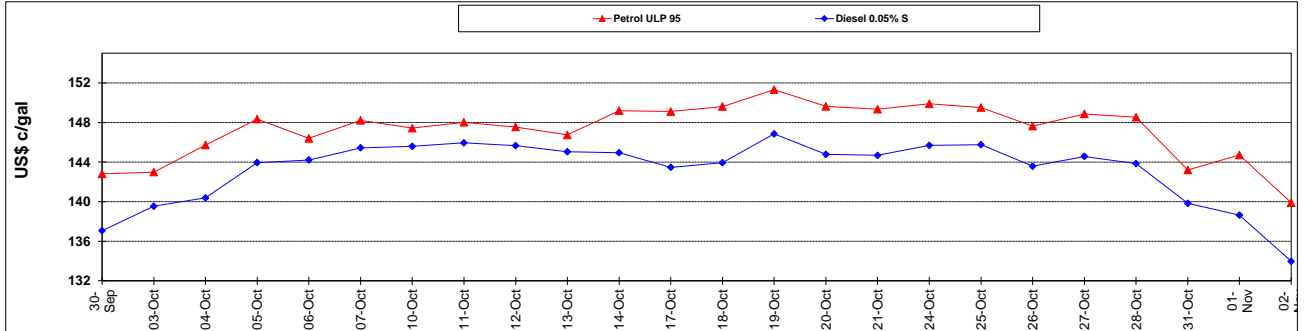
	PETROL 95	PETROL 93	DIESEL 0.05%	DIESEL 0.005%	ILL. PAR.
- MOVEMENT IN INTERNATIONAL PRODUCT PRICES	(12.390)	(12.661)	(24.992)	(26.010)	(19.111)
- MOVEMENT IN EXCHANGE RATE	12.916	12.555	12.544	12.645	12.432
AVERAGE UNIT OVER/(UNDER) RECOVERY 28/10/2016 - 02/11/2016	0.526	(0.106)	(12.448)	(13.365)	(6.679)

**R/\$ EXCHANGE RATE - (R/\$ 13.4688- 02/11/2016)**

### EXCHANGE RATE USED IN BASIC FUEL PRICE



### INTERNATIONAL PRODUCT PRICES OF BASKET USED IN BASIC FUEL PRICE



### BASIC FUEL PRICE IN SA CENTS PER LITRE

