

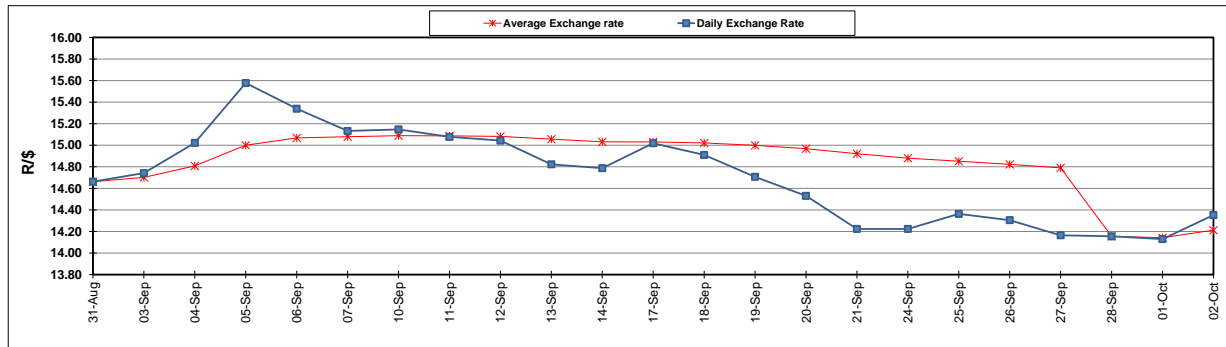
	PETROL 95 ULP	PETROL 93 ULP & LRP	DIESEL 0.05%	DIESEL 0.005%	ILL. PAR.
GAUTENG PUMP PRICE (SA c/l) AS FROM 05/09/2018	1 708.000	1 685.000	-	-	-
WHOLESALE PRICE (SA c/l) AS FROM 05/09/2018	-	-	1 564.830	1 569.230	1 057.088
SINGLE NATIONAL MAXIMUM RETAIL PRICE	-	-	-	-	1 372.000
BASIC FUEL PRICE - 02/10/2018 (SA c/l)	873.050	861.004	925.545	931.473	914.656
PRESS RELEASE CONTRIBUTION TO BFP 28/09/2018 - 02/10/2018 (SA c/l)	751.170	739.170	767.630	772.030	780.128
UNIT OVER/(UNDER) RECOVERY - 02/10/2018 (SA c/l)	(121.880)	(121.834)	(157.915)	(159.443)	(134.528)
AVERAGE BASIC FUEL PRICE 28/09/2018 - 02/10/2018	854.956	842.371	902.292	907.971	893.550
AVERAGE UNIT OVER/(UNDER) RECOVERY 28/09/2018 - 02/10/2018	(103.786)	(103.201)	(134.662)	(135.941)	(113.422)

### ANALYSIS MOVEMENT OF AVERAGE OVER/(UNDER) RECOVERY

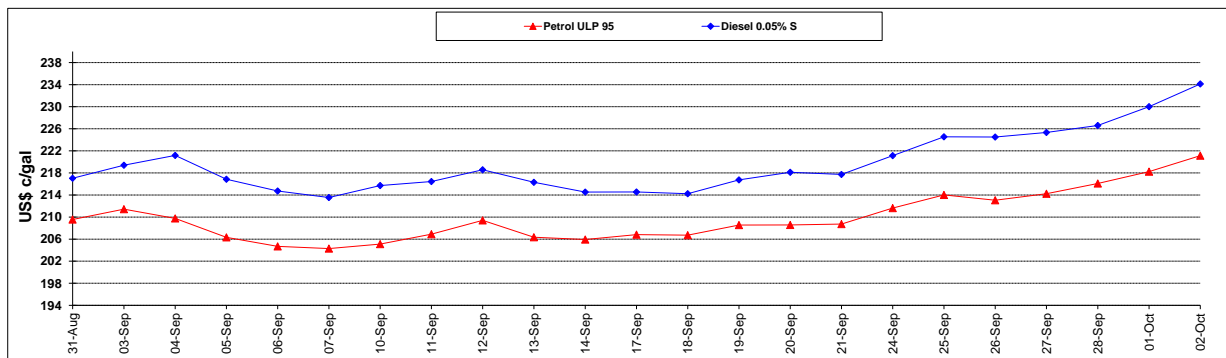
	PETROL 95	PETROL 93	DIESEL 0.05%	DIESEL 0.005%	ILL. PAR.
- MOVEMENT IN INTERNATIONAL PRODUCT PRICES	(138.535)	(137.438)	(171.334)	(172.844)	(149.738)
- MOVEMENT IN EXCHANGE RATE	34.748	34.237	36.672	36.903	36.317
AVERAGE UNIT OVER/(UNDER) RECOVERY 28/09/2018 - 02/10/2018	(103.786)	(103.201)	(134.662)	(135.941)	(113.422)

### R/\$ EXCHANGE RATE - (R/\$14.3525 - 02/10/2018)

#### EXCHANGE RATE USED IN BASIC FUEL PRICE



#### INTERNATIONAL PRODUCT PRICES OF BASKET USED IN BASIC FUEL PRICE



#### BASIC FUEL PRICE IN SA CENTS PER LITRE

