

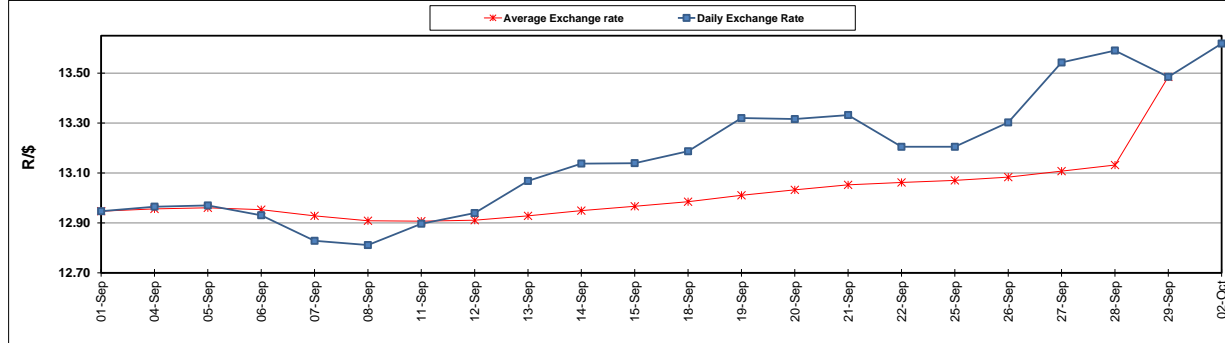
	PETROL 95 ULP	PETROL 93 ULP & LRP	DIESEL 0.05%	DIESEL 0.005%	ILL. PAR.
GAUTENG PUMP PRICE (SA c/l) AS FROM 04/10/2017	1 401.000	1 374.000	-	-	-
WHOLESALE PRICE (SA c/l) AS FROM 04/10/2017	-	-	1 212.330	1 217.730	770.088
SINGLE NATIONAL MAXIMUM RETAIL PRICE	-	-	-	-	992.000
BASIC FUEL PRICE - 02/10/2017 (SA c/l)	604.256	588.518	618.931	629.511	614.934
PRESS RELEASE CONTRIBUTION TO BFP 29/09/2017 - 02/10/2017 (SA c/l)	586.070	573.070	558.630	564.030	561.128
UNIT OVER/(UNDER) RECOVERY (SA c/l) - 02/10/2017	(18.186)	(15.448)	(60.301)	(65.481)	(53.806)
AVERAGE BASIC FUEL PRICE 29/09/2017 - 02/10/2017	608.754	593.093	623.314	633.480	620.160
AVERAGE UNIT OVER/(UNDER) RECOVERY 29/09/2017 - 02/10/2017	(22.684)	(20.023)	(64.684)	(69.450)	(59.032)

ANALYSIS MOVEMENT OF AVERAGE OVER/(UNDER) RECOVERY

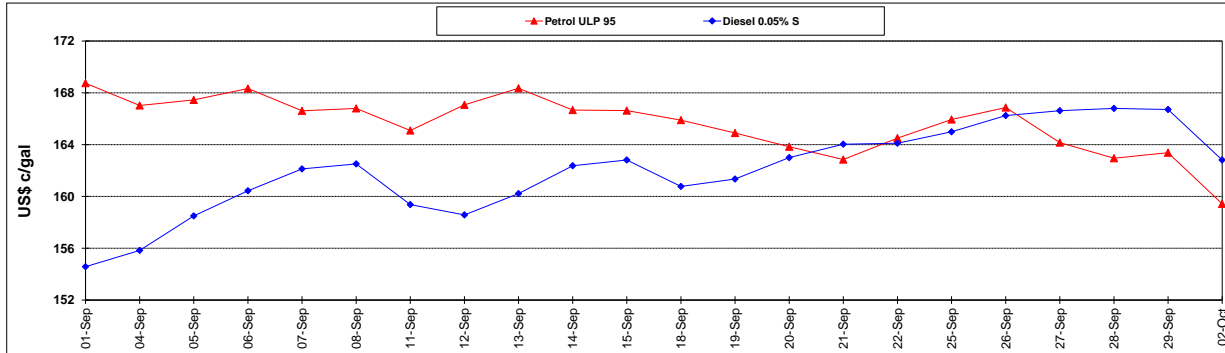
	PETROL 95	PETROL 93	DIESEL 0.05%	DIESEL 0.005%	ILL. PAR.
- MOVEMENT IN INTERNATIONAL PRODUCT PRICES	(3.817)	(1.642)	(45.366)	(49.817)	(39.812)
- MOVEMENT IN EXCHANGE RATE	(18.867)	(18.381)	(19.318)	(19.633)	(19.220)
AVERAGE UNIT OVER/(UNDER) RECOVERY 29/09/2017 - 02/10/2017	(22.684)	(20.023)	(64.684)	(69.450)	(59.032)

R/\$ EXCHANGE RATE - (R/\$13.6183 - 02/10/2017)

EXCHANGE RATE USED IN BASIC FUEL PRICE



INTERNATIONAL PRODUCT PRICES OF BASKET USED IN BASIC FUEL PRICE



BASIC FUEL PRICE IN SA CENTS PER LITRE

