

UPDATE OF THE BASIC FUEL PRICE

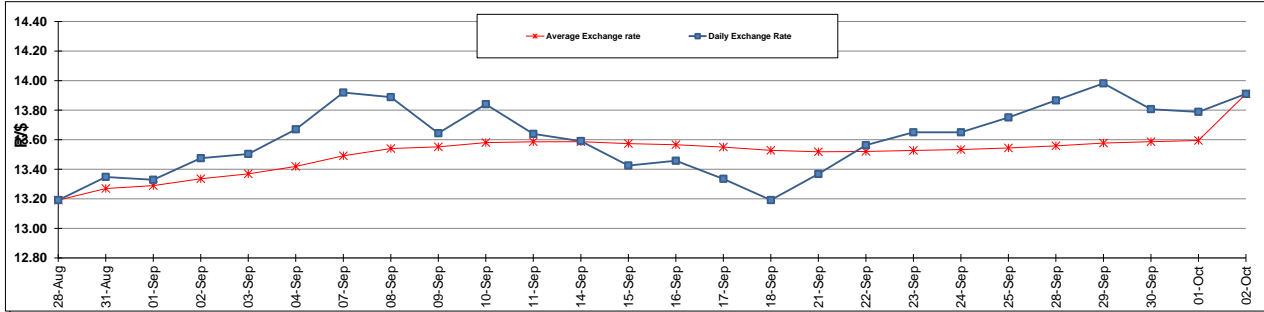
	PETROL 95 ULP	PETROL 93 ULP & LRP	DIESEL 0.05%	DIESEL 0.005%	ILL. PAR.
GAUTENG PUMP PRICE (SA c/l) AS FROM 07/10/2015	1,261.000	1,230.000	-	-	-
WHOLESALE PRICE (SA c/l) AS FROM 07/10/2015	-	-	1,093.970	1,100.370	711.828
SINGLE NATIONAL MAXIMUM RETAIL PRICE	-	-	-	-	914.000
BASIC FUEL PRICE - 02/10/2015 (SA c/l)	585.217	566.525	560.082	565.714	553.177
PRESS RELEASE CONTRIBUTION TO BFP 02/10/2015 - 02/10/2015 (SA c/l)	578.870	563.870	512.630	521.030	504.128
UNIT OVER/(UNDER) RECOVERY (SA c/l) - 02/10/2015	(6.347)	(2.655)	(47.452)	(44.684)	(49.049)
AVERAGE BASIC FUEL PRICE 02/10/2015 - 02/10/2015	585.217	566.525	560.082	565.714	553.177
AVERAGE UNIT OVER/(UNDER) RECOVERY 02/10/2015 - 02/10/2015	(6.347)	(2.655)	(47.452)	(44.684)	(49.049)

ANALYSIS MOVEMENT OF AVERAGE OVER/(UNDER) RECOVERY

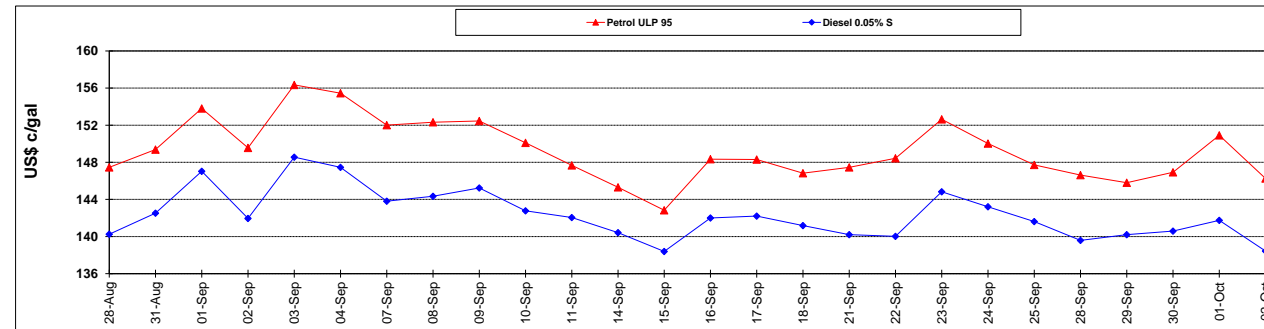
	PETROL 95	PETROL 93	DIESEL 0.05%	DIESEL 0.005%	ILL. PAR.
- MOVEMENT IN INTERNATIONAL PRODUCT PRICES	6.918	10.186	(34.757)	(31.861)	(36.510)
- MOVEMENT IN EXCHANGE RATE	(13.265)	(12.841)	(12.695)	(12.823)	(12.539)
AVERAGE UNIT OVER/(UNDER) RECOVERY 02/10/2015 - 02/10/2015	(6.347)	(2.655)	(47.452)	(44.684)	(49.049)

R/\$ EXCHANGE RATE - (R/\$ 13.9102 - 02/10/2015)

EXCHANGE RATE USED IN BASIC FUEL PRICE



INTERNATIONAL PRODUCT PRICES OF BASKET USED IN BASIC FUEL PRICE



BASIC FUEL PRICE IN SA CENTS PER LITRE

