

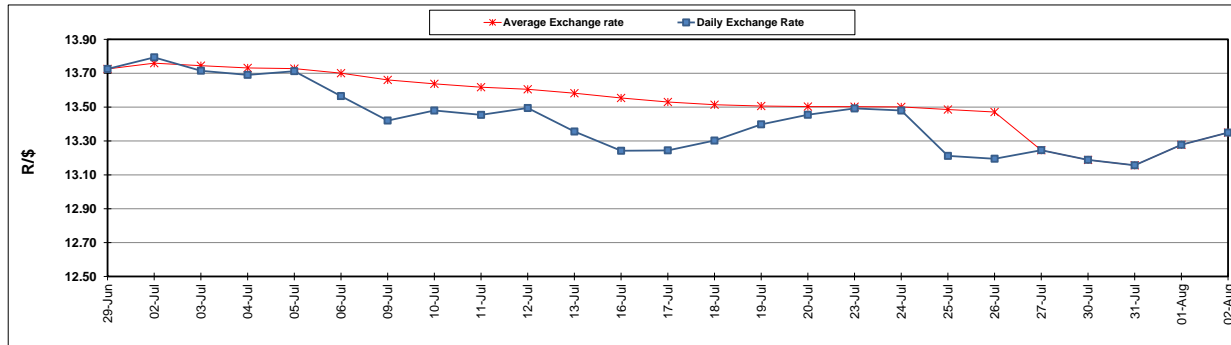
	PETROL 95 ULP	PETROL 93 ULP & LRP	DIESEL 0.05%	DIESEL 0.005%	ILL. PAR.
GAUTENG PUMP PRICE (SA c/l) AS FROM 02/08/2018	1 603.000	1 582.000	-	-	-
WHOLESALE PRICE (SA c/l) AS FROM 02/08/2018	-	-	1 440.830	1 445.230	953.088
SINGLE NATIONAL MAXIMUM RETAIL PRICE	-	-	-	-	1 233.000
BASIC FUEL PRICE - 02/08/2018 (SA c/l)	732.934	721.795	746.557	750.360	754.050
PRESS RELEASE CONTRIBUTION TO BFP 02/08/2018 - 02/08/2018 (SA c/l)	751.070	739.070	767.630	772.030	780.128
UNIT OVER/(UNDER) RECOVERY - 02/08/2018 (SA c/l)	18.136	17.275	21.073	21.670	26.078
AVERAGE BASIC FUEL PRICE 27/07/2018 - 02/08/2018	742.532	730.435	752.363	756.498	762.133
AVERAGE UNIT OVER/(UNDER) RECOVERY 27/06/2018 - 02/08/2018	7.938	8.035	17.667	17.932	15.595

ANALYSIS MOVEMENT OF AVERAGE OVER/(UNDER) RECOVERY

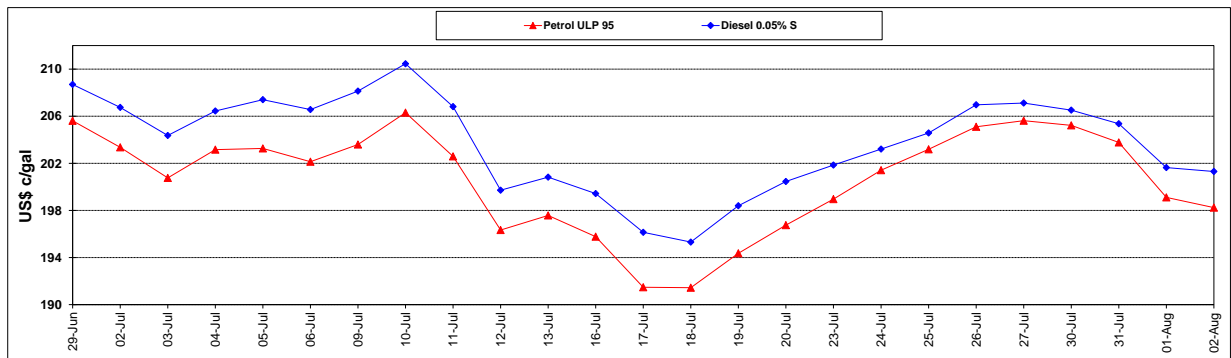
	PETROL 95	PETROL 93	DIESEL 0.05%	DIESEL 0.005%	ILL. PAR.
- MOVEMENT IN INTERNATIONAL PRODUCT PRICES	(4.829)	(4.524)	4.731	4.925	2.491
- MOVEMENT IN EXCHANGE RATE	12.767	12.559	12.936	13.007	13.104
AVERAGE UNIT OVER/(UNDER) RECOVERY 27/07/2018 - 02/08/2018	7.938	8.035	17.667	17.932	15.595

R/\$ EXCHANGE RATE - (R/\$13.3495 - 02/08/2018)

EXCHANGE RATE USED IN BASIC FUEL PRICE



INTERNATIONAL PRODUCT PRICES OF BASKET USED IN BASIC FUEL PRICE



BASIC FUEL PRICE IN SA CENTS PER LITRE

