

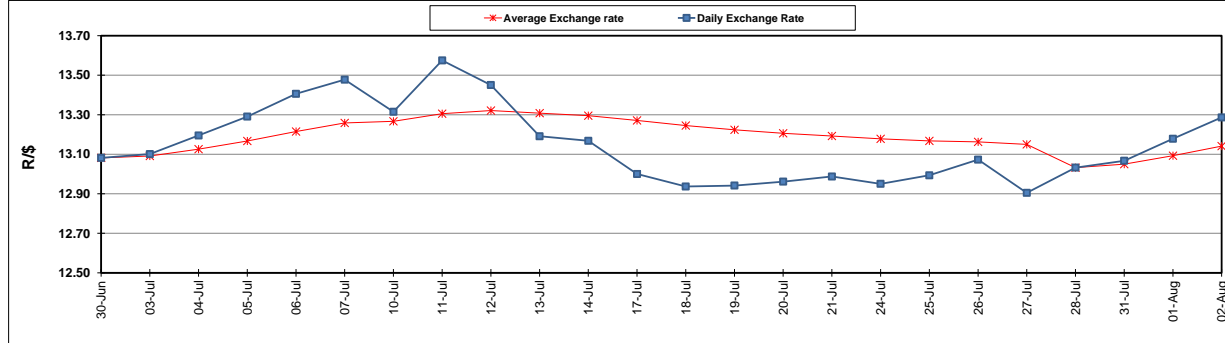
| | PETROL 95 ULP | PETROL 93 ULP & LRP | DIESEL 0.05% | DIESEL 0.005% | ILL. PAR. |
|--|------------------|------------------------|-----------------|------------------|-----------|
| GAUTENG PUMP PRICE (SA c/l) AS FROM 02/08/2017 | 1 305.000 | 1 282.000 | - | - | - |
| WHOLESALE PRICE (SA c/l) AS FROM 02/08/2017 | - | - | 1 126.330 | 1 131.730 | 683.088 |
| SINGLE NATIONAL MAXIMUM RETAIL PRICE | - | - | - | - | 876.000 |
| BASIC FUEL PRICE - 02/08/2017 (SA c/l) | 581.532 | 566.917 | 567.151 | 573.661 | 565.621 |
| PRESS RELEASE CONTRIBUTION TO BFP 02/08/2017 - 02/08/2017 (SA c/l) | 523.670 | 510.670 | 514.630 | 520.030 | 512.128 |
| UNIT OVER/(UNDER) RECOVERY (SA c/l) - 02/08/2017 | (57.862) | (56.247) | (52.521) | (53.631) | (53.493) |
| AVERAGE BASIC FUEL PRICE 28/07/2017 - 02/08/2017 | 573.580 | 558.557 | 561.992 | 568.341 | 559.503 |
| AVERAGE UNIT OVER/(UNDER) RECOVERY 28/07/2017- 02/08/2017 | (64.160) | (62.137) | (69.112) | (70.811) | (66.875) |

ANALYSIS MOVEMENT OF AVERAGE OVER/(UNDER) RECOVERY

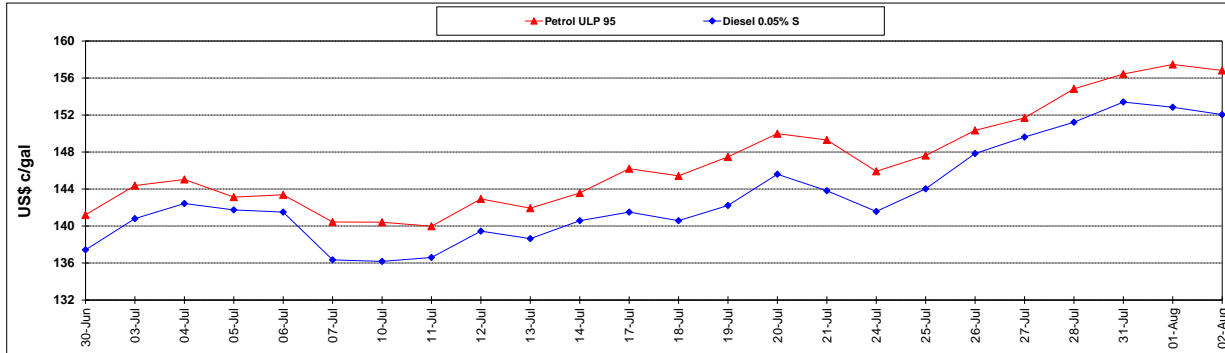
| | PETROL 95 | PETROL 93 | DIESEL 0.05% | DIESEL 0.005% | ILL. PAR. |
|--|-----------|-----------|--------------|---------------|-----------|
| - MOVEMENT IN INTERNATIONAL PRODUCT PRICES | (64.548) | (62.515) | (69.493) | (71.196) | (67.254) |
| - MOVEMENT IN EXCHANGE RATE | 0.388 | 0.378 | 0.381 | 0.385 | 0.379 |
| AVERAGE UNIT OVER/(UNDER) RECOVERY 28/07/2017 - 02/08/2017 | (64.160) | (62.137) | (69.112) | (70.811) | (66.875) |

R/\$ EXCHANGE RATE - (R/\$ 13.2865 - 02/08/2017)

EXCHANGE RATE USED IN BASIC FUEL PRICE



INTERNATIONAL PRODUCT PRICES OF BASKET USED IN BASIC FUEL PRICE



BASIC FUEL PRICE IN SA CENTS PER LITRE

