

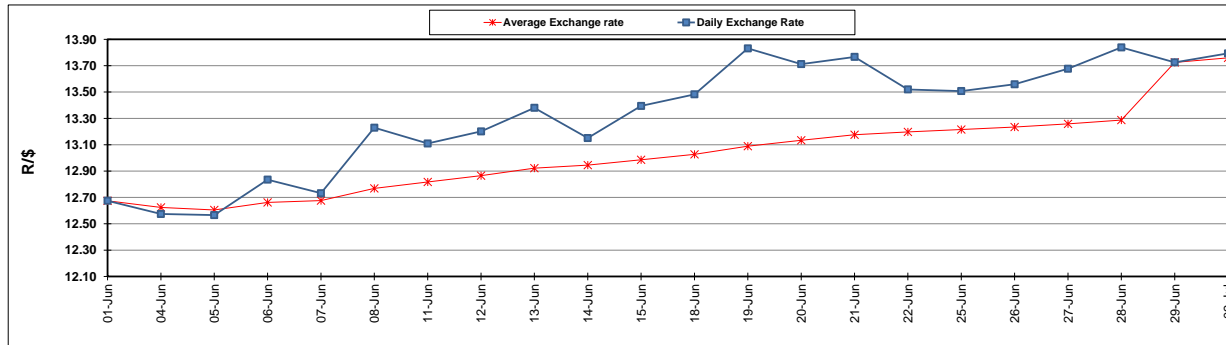
	PETROL 95 ULP	PETROL 93 ULP & LRP	DIESEL 0.05%	DIESEL 0.005%	ILL. PAR.
GAUTENG PUMP PRICE (SA c/l) AS FROM 04/07/2018	1 602.000	1 581.000	-	-	-
WHOLESALE PRICE (SA c/l) AS FROM 04/07/2018	-	-	1 444.830	1 449.230	949.088
SINGLE NATIONAL MAXIMUM RETAIL PRICE	-	-	-	-	1 228.000
BASIC FUEL PRICE - 02/07/2018 (SA c/l)	776.823	766.709	792.216	797.133	805.286
PRESS RELEASE CONTRIBUTION TO BFP 29/09/2018 - 02/07/2018 (SA c/l)	727.070	712.070	745.630	752.030	754.128
UNIT OVER/(UNDER) RECOVERY - 02/07/2018 (SA c/l)	(49.753)	(54.639)	(46.586)	(45.103)	(51.158)
AVERAGE BASIC FUEL PRICE 29/06/2018 - 02/07/2018	779.303	768.631	794.141	798.859	805.664
AVERAGE UNIT OVER/(UNDER) RECOVERY 29/06/2018 - 02/07/2018	(52.233)	(56.561)	(48.511)	(46.829)	(51.536)

ANALYSIS MOVEMENT OF AVERAGE OVER/(UNDER) RECOVERY

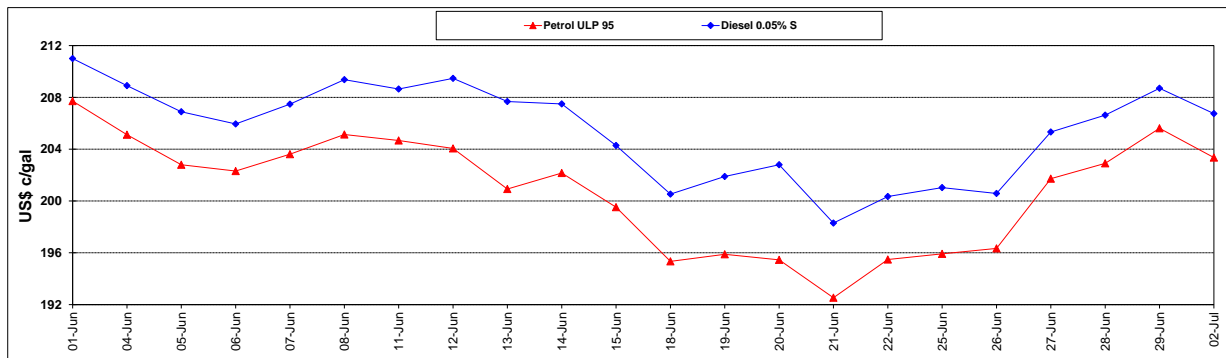
	PETROL 95	PETROL 93	DIESEL 0.05%	DIESEL 0.005%	ILL. PAR.
- MOVEMENT IN INTERNATIONAL PRODUCT PRICES	(25.483)	(30.177)	(21.252)	(19.408)	(23.881)
- MOVEMENT IN EXCHANGE RATE	(26.750)	(26.384)	(27.259)	(27.421)	(27.655)
AVERAGE UNIT OVER/(UNDER) RECOVERY 29/06/2018 - 02/07/2018	(52.233)	(56.561)	(48.511)	(46.829)	(51.536)

R/\$ EXCHANGE RATE - (R/\$13.7935 - 02/07/2018)

EXCHANGE RATE USED IN BASIC FUEL PRICE



INTERNATIONAL PRODUCT PRICES OF BASKET USED IN BASIC FUEL PRICE



BASIC FUEL PRICE IN SA CENTS PER LITRE

