

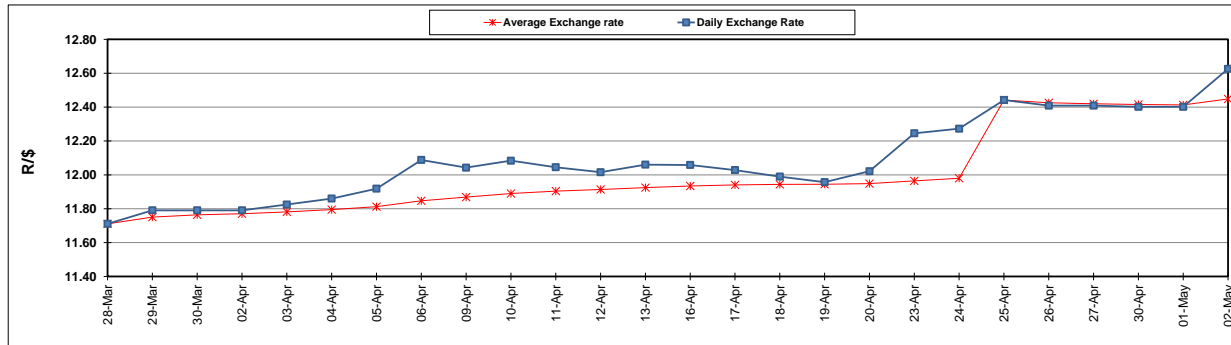
	PETROL 95 ULP	PETROL 93 ULP & LRP	DIESEL 0.05%	DIESEL 0.005%	ILL. PAR.
GAUTENG PUMP PRICE (SA c/l) AS FROM 02/05/2018	1 497.000	1 472.000	-	-	-
WHOLESALE PRICE (SA c/l) AS FROM 02/05/2018	-	-	1 333.830	1 338.230	845.088
SINGLE NATIONAL MAXIMUM RETAIL PRICE	-	-	-	-	1 089.000
BASIC FUEL PRICE - 02/05/2018 (SA c/l)	694.641	680.970	714.388	719.986	727.849
PRESS RELEASE CONTRIBUTION TO BFP 02/05/2018 - 02/05/2018 (SA c/l)	645.070	630.070	660.630	665.030	672.128
UNIT OVER/(UNDER) RECOVERY - 02/05/2018 (SA c/l)	(49.571)	(50.900)	(53.758)	(54.956)	(55.721)
AVERAGE BASIC FUEL PRICE 25/04/2018 - 02/05/2018	691.405	676.572	710.970	716.121	726.299
AVERAGE UNIT OVER/(UNDER) RECOVERY 25/04/2018 - 02/05/2018	(87.169)	(87.335)	(99.506)	(99.424)	(97.505)

ANALYSIS MOVEMENT OF AVERAGE OVER/(UNDER) RECOVERY

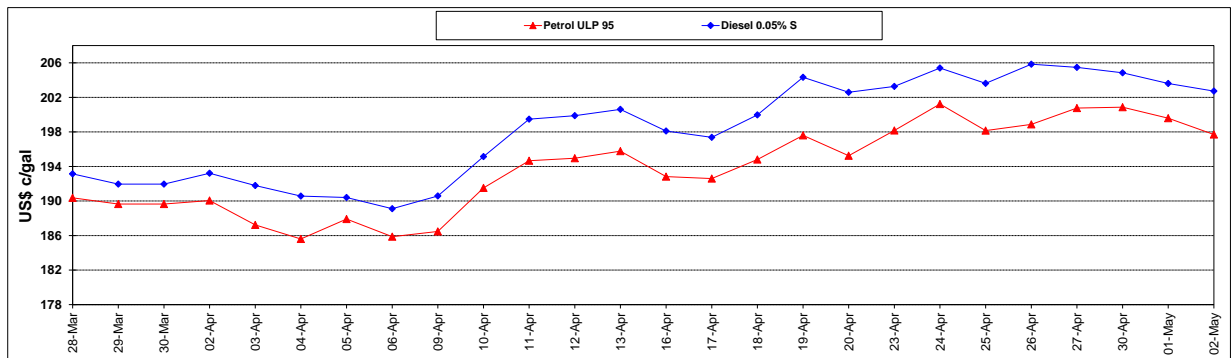
	PETROL 95	PETROL 93	DIESEL 0.05%	DIESEL 0.005%	ILL. PAR.
- MOVEMENT IN INTERNATIONAL PRODUCT PRICES	(61.152)	(61.877)	(72.754)	(72.478)	(70.175)
- MOVEMENT IN EXCHANGE RATE	(26.016)	(25.458)	(26.753)	(26.946)	(27.329)
AVERAGE UNIT OVER/(UNDER) RECOVERY 25/04/2018 - 02/05/2018	(87.169)	(87.335)	(99.506)	(99.424)	(97.505)

R/\$ EXCHANGE RATE - (R/\$12.6258 - 02/05/2018)

EXCHANGE RATE USED IN BASIC FUEL PRICE



INTERNATIONAL PRODUCT PRICES OF BASKET USED IN BASIC FUEL PRICE



BASIC FUEL PRICE IN SA CENTS PER LITRE

