

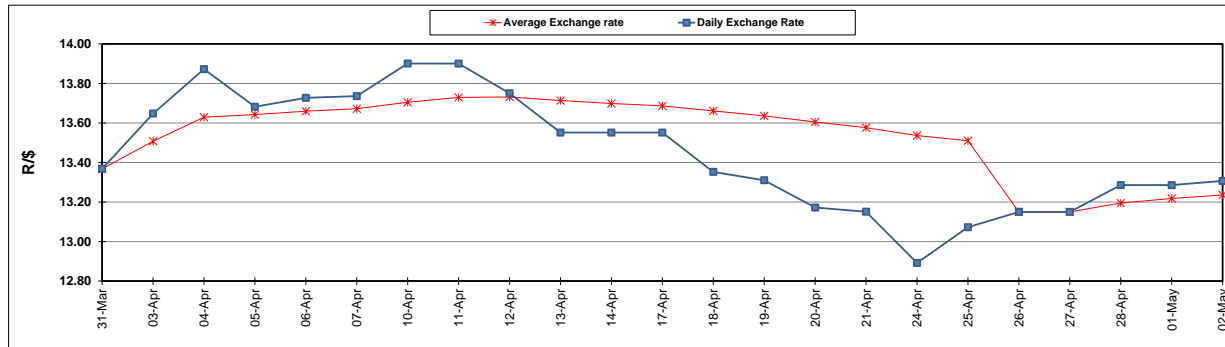
	PETROL 95 ULP	PETROL 93 ULP & LRP	DIESEL 0.05%	DIESEL 0.005%	ILL. PAR.
GAUTENG PUMP PRICE (SA c/l) AS FROM 03/05/2017	1 379.000	1 357.000	-	-	-
WHOLESALE PRICE (SA c/l) AS FROM 03/05/2017	-	-	1 180.330	1 184.730	736.088
SINGLE NATIONAL MAXIMUM RETAIL PRICE	-	-	-	-	947.000
BASIC FUEL PRICE - 02/05/2017 (SA c/l)	558.286	541.735	538.565	542.289	532.186
PRESS RELEASE CONTRIBUTION TO BFP 26/04/2017 - 02/05/2017 (SA c/l)	548.670	536.670	538.630	541.030	531.128
UNIT OVER/(UNDER) RECOVERY (SA c/l) - 02/05/2017	(9.616)	(5.065)	0.065	(1.259)	(1.058)
AVERAGE BASIC FUEL PRICE 26/04/2017 - 02/05/2017	562.726	546.476	541.500	545.684	534.586
AVERAGE UNIT OVER/(UNDER) RECOVERY 26/04/2017 - 02/05/2017	(14.056)	(9.806)	(2.870)	(4.654)	(3.458)

ANALYSIS MOVEMENT OF AVERAGE OVER/(UNDER) RECOVERY

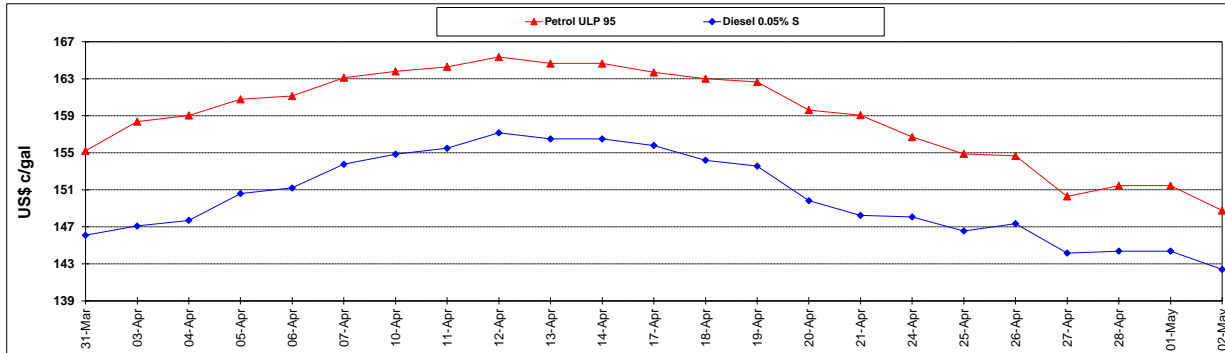
	PETROL 95	PETROL 93	DIESEL 0.05%	DIESEL 0.005%	ILL. PAR.
- MOVEMENT IN INTERNATIONAL PRODUCT PRICES	(25.752)	(21.165)	(14.125)	(15.996)	(14.569)
- MOVEMENT IN EXCHANGE RATE	11.696	11.359	11.255	11.342	11.111
AVERAGE UNIT OVER/(UNDER) RECOVERY 26/04/2017 - 02/05/2017	(14.056)	(9.806)	(2.870)	(4.654)	(3.458)

R/\$ EXCHANGE RATE - (R/\$ 13.3065 - 02/05/2017)

EXCHANGE RATE USED IN BASIC FUEL PRICE



INTERNATIONAL PRODUCT PRICES OF BASKET USED IN BASIC FUEL PRICE



BASIC FUEL PRICE IN SA CENTS PER LITRE

