

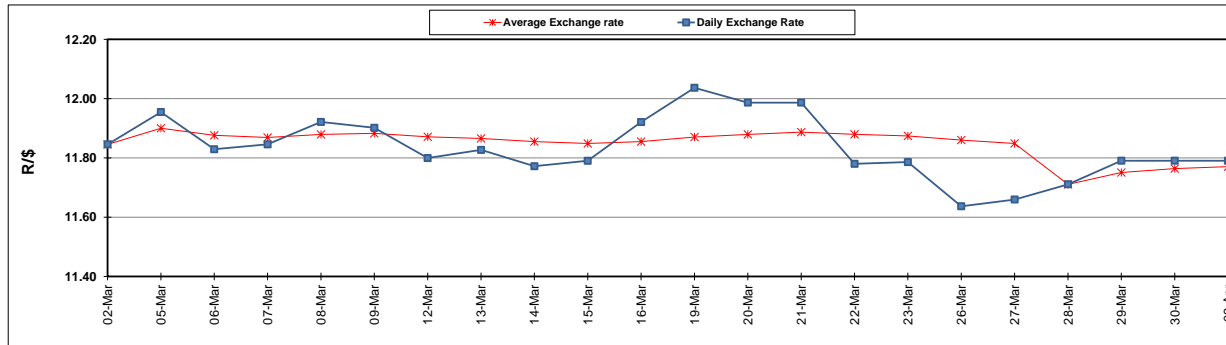
	PETROL 95 ULP	PETROL 93 ULP & LRP	DIESEL 0.05%	DIESEL 0.005%	ILL. PAR.
GAUTENG PUMP PRICE (SA c/l) AS FROM 07/03/2018	1 448.000	1 423.000	-	-	-
WHOLESALE PRICE (SA c/l) AS FROM 07/03/2018	-	-	1 274.830	1 280.230	793.088
SINGLE NATIONAL MAXIMUM RETAIL PRICE	-	-	-	-	1 026.000
BASIC FUEL PRICE - 02/04/2018 (SA c/l)	626.806	612.694	639.480	644.791	647.105
PRESS RELEASE CONTRIBUTION TO BFP 28/03/2018 - 02/04/2018 (SA c/l)	586.170	574.170	598.630	604.030	625.128
UNIT OVER/(UNDER) RECOVERY - 02/04/2018 (SA c/l)	(40.636)	(38.524)	(40.850)	(40.761)	(21.977)
AVERAGE BASIC FUEL PRICE 28/03/2018 - 02/04/2018	625.535	611.446	636.561	641.867	643.592
AVERAGE UNIT OVER/(UNDER) RECOVERY 28/03/2018 - 02/04/2018	(39.365)	(37.276)	(37.931)	(37.837)	(18.464)

ANALYSIS MOVEMENT OF AVERAGE OVER/(UNDER) RECOVERY

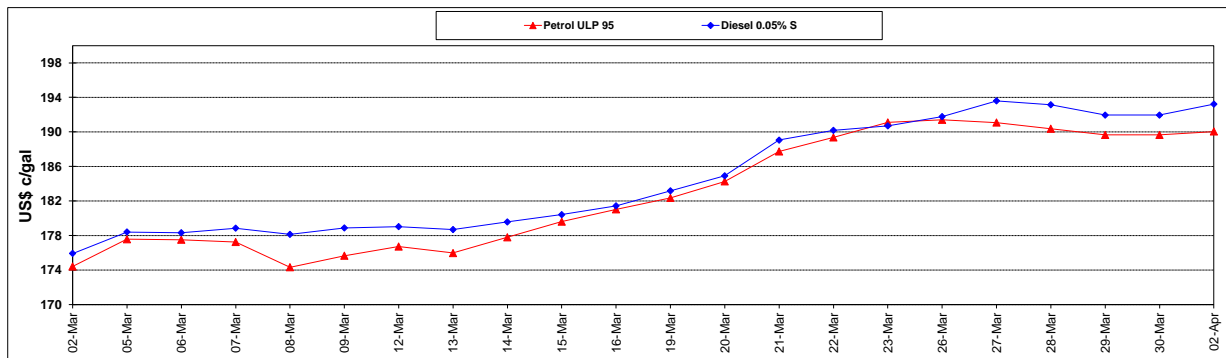
	PETROL 95	PETROL 93	DIESEL 0.05%	DIESEL 0.005%	ILL. PAR.
- MOVEMENT IN INTERNATIONAL PRODUCT PRICES	(43.526)	(41.343)	(42.166)	(42.107)	(22.745)
- MOVEMENT IN EXCHANGE RATE	4.161	4.067	4.235	4.270	4.281
AVERAGE UNIT OVER/(UNDER) RECOVERY 02/03/2018 - 02/04/2018	(39.365)	(37.276)	(37.931)	(37.837)	(18.464)

R/\$ EXCHANGE RATE - (R/\$11.7905 - 02/04/2018)

EXCHANGE RATE USED IN BASIC FUEL PRICE



INTERNATIONAL PRODUCT PRICES OF BASKET USED IN BASIC FUEL PRICE



BASIC FUEL PRICE IN SA CENTS PER LITRE

