

## UPDATE OF THE BASIC FUEL PRICE

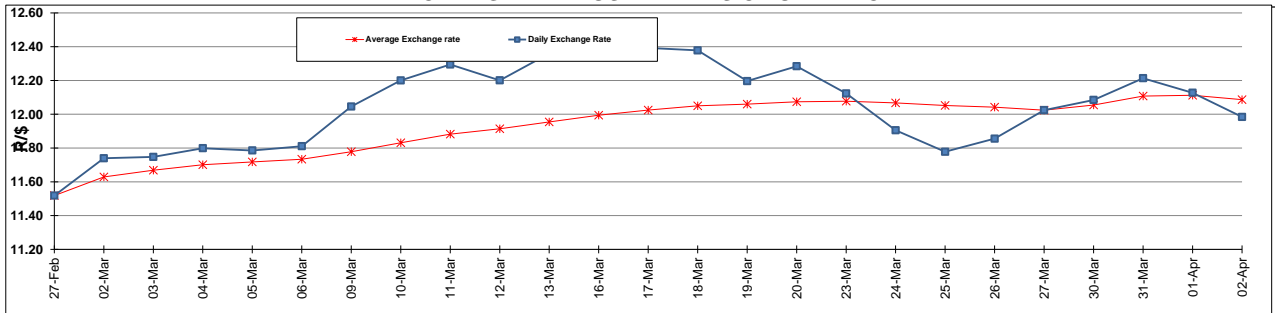
	PETROL 95 ULP	PETROL 93 ULP & LRP	DIESEL 0.05%	DIESEL 0.005%	ILL. PAR.
GAUTENG PUMP PRICE (SA c/l) AS FROM 02/04/2015	1,289.000	1,261.000	-	-	-
WHOLESALE PRICE (SA c/l) AS FROM 02/04/2015	-	-	1,122.790	1,129.190	743.828
SINGLE NATIONAL MAXIMUM RETAIL PRICE	-	-	-	-	957.000
BASIC FUEL PRICE - 02/04/2015 (SA c/l)	571.047	555.598	554.613	560.869	550.087
PRESS RELEASE CONTRIBUTION TO BFP 02/04/2015 - 02/04/2015 (SA c/l)	615.650	597.650	594.630	601.030	586.128
UNIT OVER/(UNDER) RECOVERY (SA c/l) - 02/04/2015	44.603	42.052	40.017	40.161	36.041
AVERAGE BASIC FUEL PRICE 27/03/2015 - 02/04/2015	587.976	571.243	567.512	573.732	564.122
AVERAGE UNIT OVER/(UNDER) RECOVERY 27/03/2015 - 02/04/2015	(19.966)	(17.633)	3.118	2.098	8.806

### ANALYSIS MOVEMENT OF AVERAGE OVER/(UNDER) RECOVERY

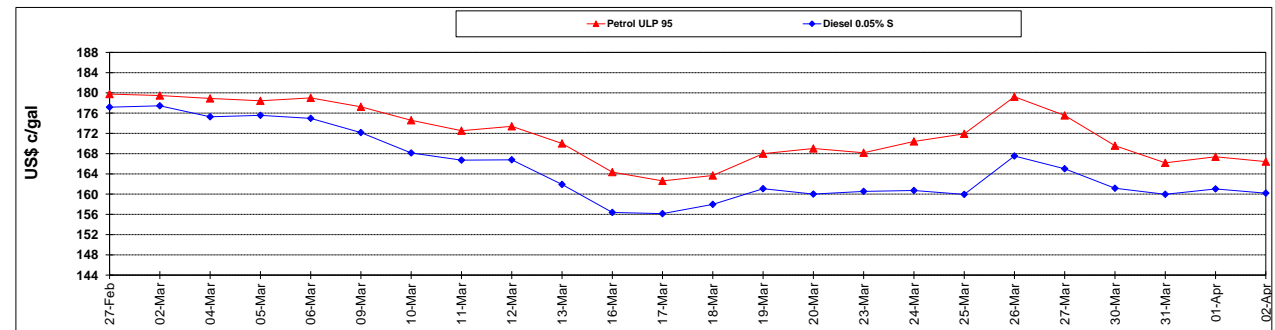
	PETROL 95	PETROL 93	DIESEL 0.05%	DIESEL 0.005%	ILL. PAR.
- MOVEMENT IN INTERNATIONAL PRODUCT PRICES	(17.801)	(15.530)	5.207	4.210	10.883
- MOVEMENT IN EXCHANGE RATE	(2.165)	(2.103)	(2.089)	(2.112)	(2.077)
AVERAGE UNIT OVER/(UNDER) RECOVERY 27/03/2015 - 02/04/2015	(19.966)	(17.633)	3.118	2.098	8.806

**R/\$ EXCHANGE RATE - (R/\$ 11.9842 - 02/04/2015)**

### EXCHANGE RATE USED IN BASIC FUEL PRICE



### INTERNATIONAL PRODUCT PRICES OF BASKET USED IN BASIC FUEL PRICE



### BASIC FUEL PRICE IN SA CENTS PER LITRE

