

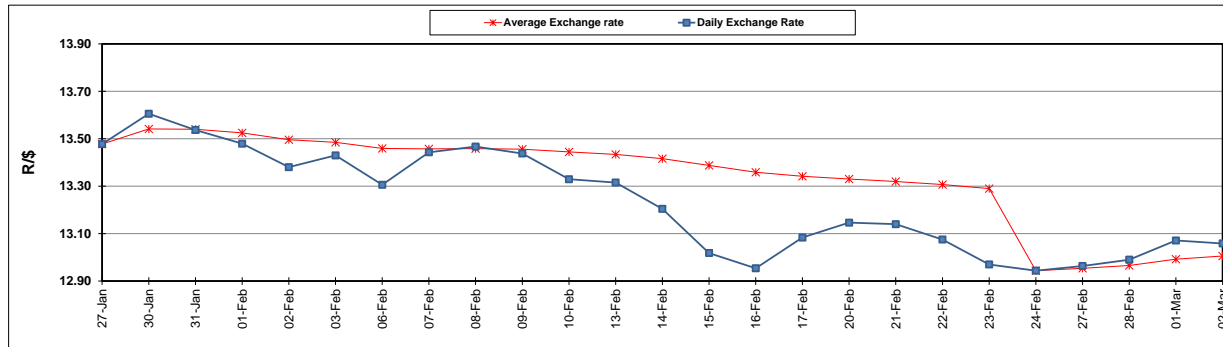
	PETROL 95 ULP	PETROL 93 ULP & LRP	DIESEL 0.05%	DIESEL 0.005%	ILL. PAR.
GAUTENG PUMP PRICE (SA c/l) AS FROM 01/03/2017	1 354.000	1 330.000	-	-	-
WHOLESALE PRICE (SA c/l) AS FROM 01/03/2017	-	-	1 160.830	1 163.230	750.588
SINGLE NATIONAL MAXIMUM RETAIL PRICE	-	-	-	-	966.000
BASIC FUEL PRICE - 02/03/2017 (SA c/l)	559.689	549.057	570.245	573.437	561.294
PRESS RELEASE CONTRIBUTION TO BFP 24/02/2017 - 02/03/2017 (SA c/l)	612.870	598.870	588.630	591.030	583.128
UNIT OVER/(UNDER) RECOVERY (SA c/l) - 02/03/2017	53.181	49.813	18.385	17.593	21.834
AVERAGE BASIC FUEL PRICE 24/02/2017 - 02/03/2017	577.520	566.317	574.558	577.673	567.218
AVERAGE UNIT OVER/(UNDER) RECOVERY 24/02/2017- 02/03/2017	40.150	37.353	15.272	14.557	20.710

### ANALYSIS MOVEMENT OF AVERAGE OVER/(UNDER) RECOVERY

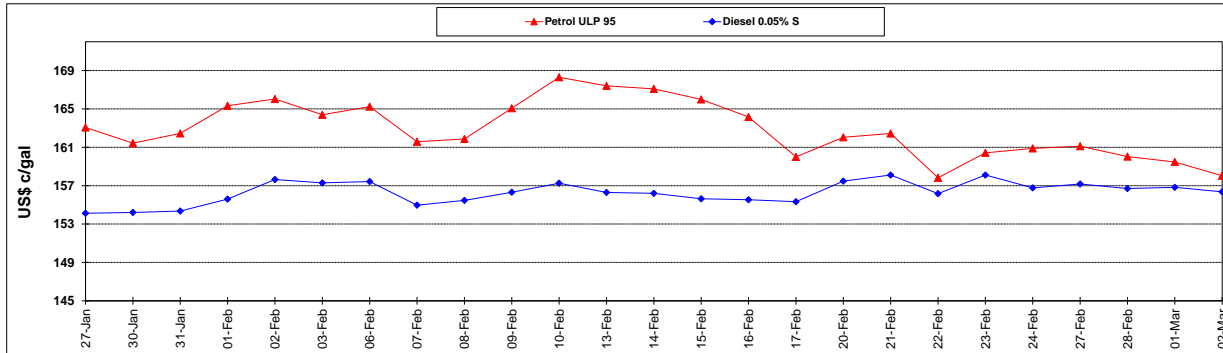
	PETROL 95	PETROL 93	DIESEL 0.05%	DIESEL 0.005%	ILL. PAR.
- MOVEMENT IN INTERNATIONAL PRODUCT PRICES	41.722	38.894	16.836	16.129	22.254
- MOVEMENT IN EXCHANGE RATE	(1.572)	(1.541)	(1.564)	(1.572)	(1.544)
AVERAGE UNIT OVER/(UNDER) RECOVERY 24/02/2017 - 02/03/2017	40.150	37.353	15.272	14.557	20.710

### R/\$ EXCHANGE RATE - (R/\$ 13.0585 - 02/03/2017)

#### EXCHANGE RATE USED IN BASIC FUEL PRICE



#### INTERNATIONAL PRODUCT PRICES OF BASKET USED IN BASIC FUEL PRICE



#### BASIC FUEL PRICE IN SA CENTS PER LITRE

