

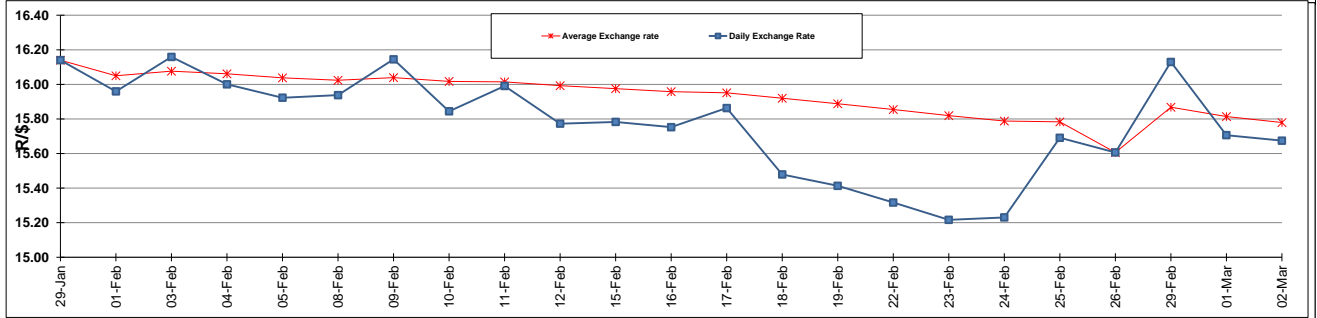
	PETROL 95 ULP	PETROL 93 ULP & LRP	DIESEL 0.05%	DIESEL 0.005%	ILL. PAR.
GAUTENG PUMP PRICE (SA c/l) AS FROM 02/03/2016	1 174.000	1 146.000	-	-	-
WHOLESALE PRICE (SA c/l) AS FROM 02/03/2016	-	-	958.170	961.570	605.028
SINGLE NATIONAL MAXIMUM RETAIL PRICE	-	-	-	-	772.000
BASIC FUEL PRICE - 02/03/2016 (SA c/l)	505.820	482.766	464.947	469.285	481.171
PRESS RELEASE CONTRIBUTION TO BFP 02/03/2016 - 02/03/2016 (SA c/l)	487.970	469.970	427.630	431.030	445.128
UNIT OVER/(UNDER) RECOVERY (SA c/l) - 02/03/2016	(17.850)	(12.796)	(37.317)	(38.255)	(36.043)
AVERAGE BASIC FUEL PRICE 02/03/2016 - 02/03/2016	508.724	485.884	462.263	466.114	479.427
AVERAGE UNIT OVER/(UNDER) RECOVERY 26/02/2016 - 02/03/2016	30.996	35.836	(45.883)	(45.584)	(47.049)

ANALYSIS MOVEMENT OF AVERAGE OVER/(UNDER) RECOVERY

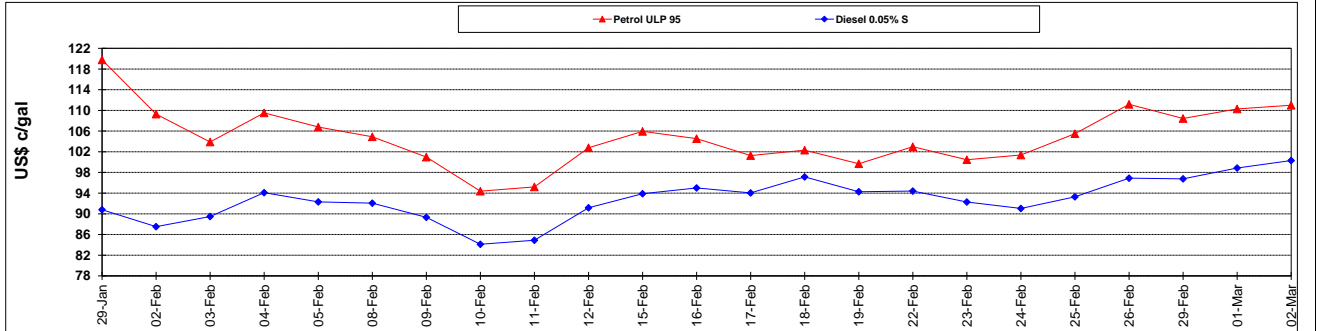
	PETROL 95	PETROL 93	DIESEL 0.05%	DIESEL 0.005%	ILL. PAR.
- MOVEMENT IN INTERNATIONAL PRODUCT PRICES	30.864	35.710	(46.003)	(45.705)	(47.174)
- MOVEMENT IN EXCHANGE RATE	0.132	0.126	0.120	0.121	0.125
AVERAGE UNIT OVER/(UNDER) RECOVERY 26/02/2016 - 02/03/2016	30.996	35.836	(45.883)	(45.584)	(47.049)

R/\$ EXCHANGE RATE - (R/\$ 15.6744 - 02/03/2016)

EXCHANGE RATE USED IN BASIC FUEL PRICE



INTERNATIONAL PRODUCT PRICES OF BASKET USED IN BASIC FUEL PRICE



BASIC FUEL PRICE IN SA CENTS PER LITRE

