

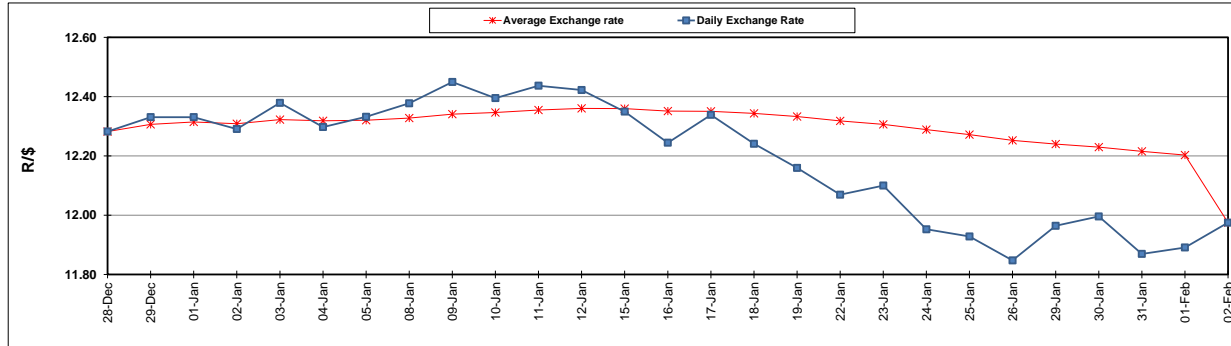
	PETROL 95 ULP	PETROL 93 ULP & LRP	DIESEL 0.05%	DIESEL 0.005%	ILL. PAR.
GAUTENG PUMP PRICE (SA c/l) AS FROM 07/02/2018	1 412.000	1 419.000	-	-	-
WHOLESALE PRICE (SA c/l) AS FROM 07/02/2018	-	-	1 256.630	1 259.030	818.388
SINGLE NATIONAL MAXIMUM RETAIL PRICE	-	-	-	-	1 056.000
BASIC FUEL PRICE - 02/02/2018 (SA c/l)	641.835	626.641	650.170	654.973	664.530
PRESS RELEASE CONTRIBUTION TO BFP 02/02/2018 - 02/02/2018 (SA c/l)	652.170	640.170	662.630	665.030	667.128
UNIT OVER/(UNDER) RECOVERY - 02/02/2018 (SA c/l)	10.335	13.529	12.460	10.057	2.598
AVERAGE BASIC FUEL PRICE 02/02/2018 - 02/02/2018	641.835	626.641	650.170	654.973	664.530
AVERAGE UNIT OVER/(UNDER) RECOVERY 02/02/2018 - 02/02/2018	10.335	13.529	12.460	10.057	2.598

ANALYSIS MOVEMENT OF AVERAGE OVER/(UNDER) RECOVERY

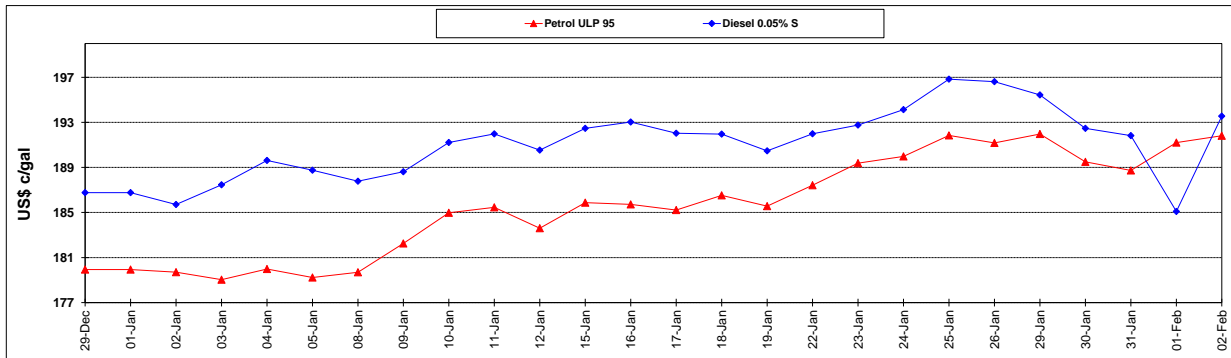
	PETROL 95	PETROL 93	DIESEL 0.05%	DIESEL 0.005%	ILL. PAR.
- MOVEMENT IN INTERNATIONAL PRODUCT PRICES	(1.891)	1.593	0.075	(2.419)	(10.060)
- MOVEMENT IN EXCHANGE RATE	12.226	11.936	12.385	12.476	12.658
AVERAGE UNIT OVER/(UNDER) RECOVERY 02/02/2018 - 02/02/2018	10.335	13.529	12.460	10.057	2.598

R/\$ EXCHANGE RATE - (R/\$ 11.9748 - 02/02/2018)

EXCHANGE RATE USED IN BASIC FUEL PRICE



INTERNATIONAL PRODUCT PRICES OF BASKET USED IN BASIC FUEL PRICE



BASIC FUEL PRICE IN SA CENTS PER LITRE

