

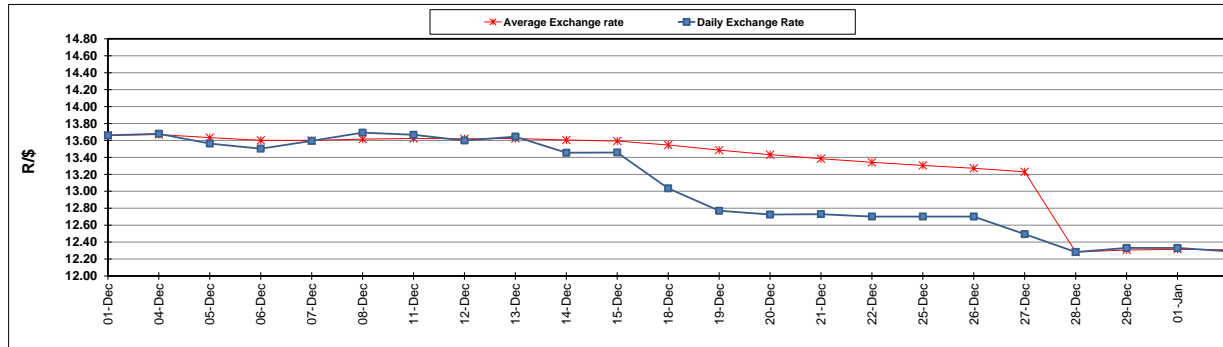
	PETROL 95 ULP	PETROL 93 ULP & LRP	DIESEL 0.05%	DIESEL 0.005%	ILL. PAR.
GAUTENG PUMP PRICE (SA c/l) AS FROM 03/01/2018	1 442.000	1 420.000	-	-	-
WHOLESALE PRICE (SA c/l) AS FROM 03/01/2018	-	-	1 273.630	1 276.030	837.388
SINGLE NATIONAL MAXIMUM RETAIL PRICE	-	-	-	-	1 082.000
BASIC FUEL PRICE - 02/01/2018 (SA c/l)	611.309	600.630	633.128	635.413	637.376
PRESS RELEASE CONTRIBUTION TO BFP 28/12/2017 - 02/01/2018 (SA c/l)	686.170	669.170	684.630	691.030	695.128
UNIT OVER/(UNDER) RECOVERY - 02/01/2018 (SA c/l)	74.861	68.540	51.502	55.617	57.752
AVERAGE BASIC FUEL PRICE 28/12/2017 - 02/01/2018	613.792	603.696	636.302	638.468	640.128
AVERAGE UNIT OVER/(UNDER) RECOVERY 28/12/2017 - 02/01/2018	72.378	65.474	48.328	52.562	55.001

ANALYSIS MOVEMENT OF AVERAGE OVER/(UNDER) RECOVERY

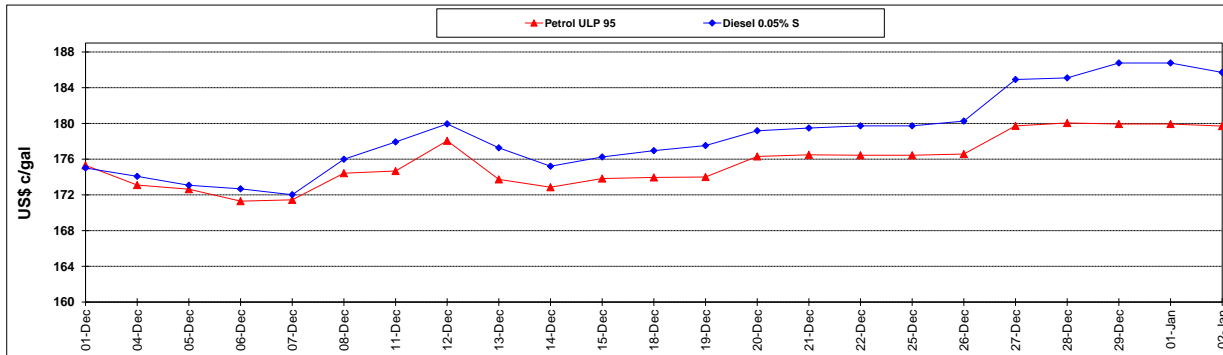
	PETROL 95	PETROL 93	DIESEL 0.05%	DIESEL 0.005%	ILL. PAR.
- MOVEMENT IN INTERNATIONAL PRODUCT PRICES	26.421	20.273	0.686	4.757	7.071
- MOVEMENT IN EXCHANGE RATE	45.957	45.201	47.642	47.805	47.929
AVERAGE UNIT OVER/(UNDER) RECOVERY 28/12/2017 - 02/01/2018	72.378	65.474	48.328	52.562	55.001

R/\$ EXCHANGE RATE - (R/\$ 12.2908 - 02/01/2018)

EXCHANGE RATE USED IN BASIC FUEL PRICE



INTERNATIONAL PRODUCT PRICES OF BASKET USED IN BASIC FUEL PRICE



BASIC FUEL PRICE IN SA CENTS PER LITRE

