

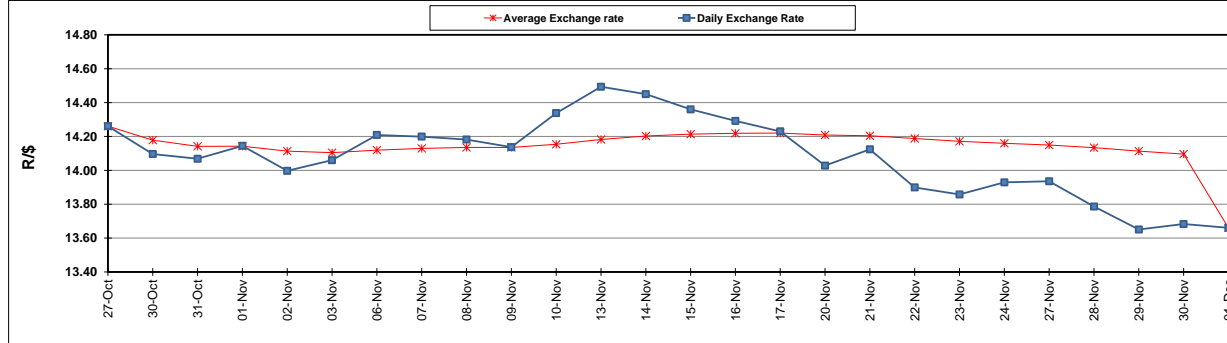
	PETROL 95 ULP	PETROL 93 ULP & LRP	DIESEL 0.05%	DIESEL 0.005%	ILL. PAR.
GAUTENG PUMP PRICE (SA c/l) AS FROM 06/12/2017	1 476.000	1 449.000	-	-	-
WHOLESALE PRICE (SA c/l) AS FROM 06/12/2017	-	-	1 295.630	1 302.030	865.388
SINGLE NATIONAL MAXIMUM RETAIL PRICE	-	-	-	-	1 119.000
BASIC FUEL PRICE - 01/12/2017 (SA c/l)	664.688	650.475	666.209	670.570	671.965
PRESS RELEASE CONTRIBUTION TO BFP 01/12/2017 - 01/12/2017 (SA c/l)	619.070	602.070	623.630	633.030	621.128
UNIT OVER/(UNDER) RECOVERY - 01/12/2017 (SA c/l)	(45.618)	(48.405)	(42.579)	(37.540)	(50.837)
AVERAGE BASIC FUEL PRICE 01/12/2017 - 01/12/2017	664.688	650.475	666.209	670.570	671.965
AVERAGE UNIT OVER/(UNDER) RECOVERY 01/12/2017 - 01/12/2017	(45.618)	(48.405)	(42.579)	(37.540)	(50.837)

ANALYSIS MOVEMENT OF AVERAGE OVER/(UNDER) RECOVERY

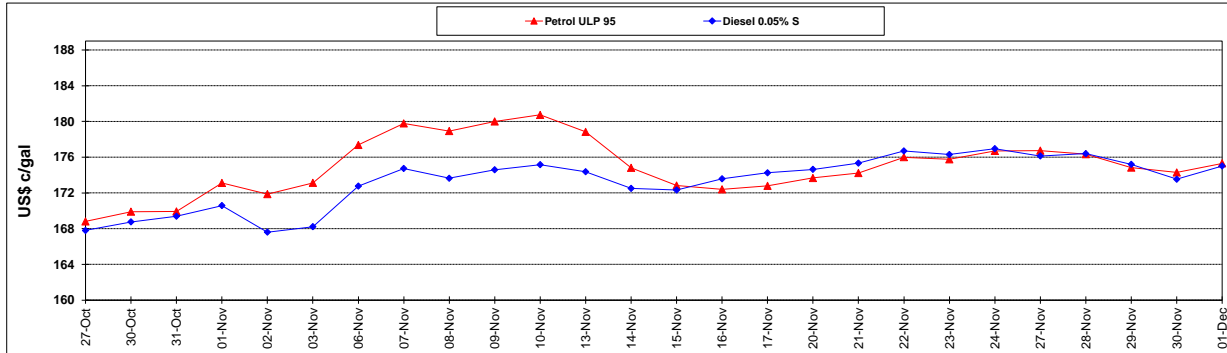
	PETROL 95	PETROL 93	DIESEL 0.05%	DIESEL 0.005%	ILL. PAR.
- MOVEMENT IN INTERNATIONAL PRODUCT PRICES	(66.828)	(69.161)	(63.837)	(58.938)	(72.279)
- MOVEMENT IN EXCHANGE RATE	21.210	20.756	21.258	21.398	21.442
AVERAGE UNIT OVER/(UNDER) RECOVERY 01/12/2017 - 01/12/2017	(45.618)	(48.405)	(42.579)	(37.540)	(50.837)

R/\$ EXCHANGE RATE - (R/\$ 13.6605 - 01/12/2017)

EXCHANGE RATE USED IN BASIC FUEL PRICE



INTERNATIONAL PRODUCT PRICES OF BASKET USED IN BASIC FUEL PRICE



BASIC FUEL PRICE IN SA CENTS PER LITRE

