

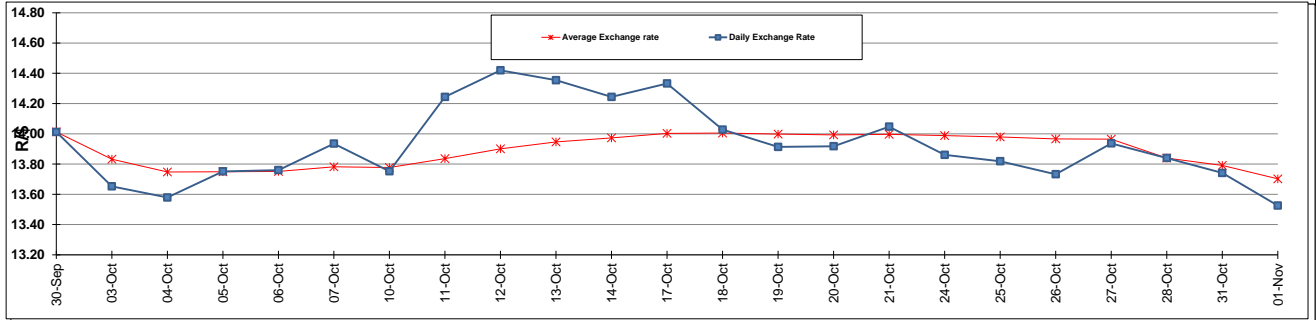
	PETROL 95 ULP	PETROL 93 ULP & LRP	DIESEL 0.05%	DIESEL 0.005%	ILL. PAR.
GAUTENG PUMP PRICE (SA c/l) AS FROM 02/11/2016	1 305.000	1 279.000	-	-	-
WHOLESALE PRICE (SA c/l) AS FROM 02/11/2016	-	-	1 134.870	1 138.270	726.628
SINGLE NATIONAL MAXIMUM RETAIL PRICE	-	-	-	-	934.000
BASIC FUEL PRICE - 01/11/2016 (SA c/l)	545.988	531.900	526.331	530.785	520.827
PRESS RELEASE CONTRIBUTION TO BFP 28/10/2016 - 01/11/2016 (SA c/l)	538.970	522.970	505.630	509.030	508.128
UNIT OVER/(UNDER) RECOVERY (SA c/l) - 01/11/2016	(7.018)	(8.930)	(20.701)	(21.755)	(12.699)
AVERAGE BASIC FUEL PRICE 28/10/2016 - 01/11/2016	557.429	541.274	542.631	546.972	538.377
AVERAGE UNIT OVER/(UNDER) RECOVERY 28/10/2016 - 01/11/2016	(18.459)	(18.304)	(37.001)	(37.942)	(30.249)

ANALYSIS MOVEMENT OF AVERAGE OVER/(UNDER) RECOVERY

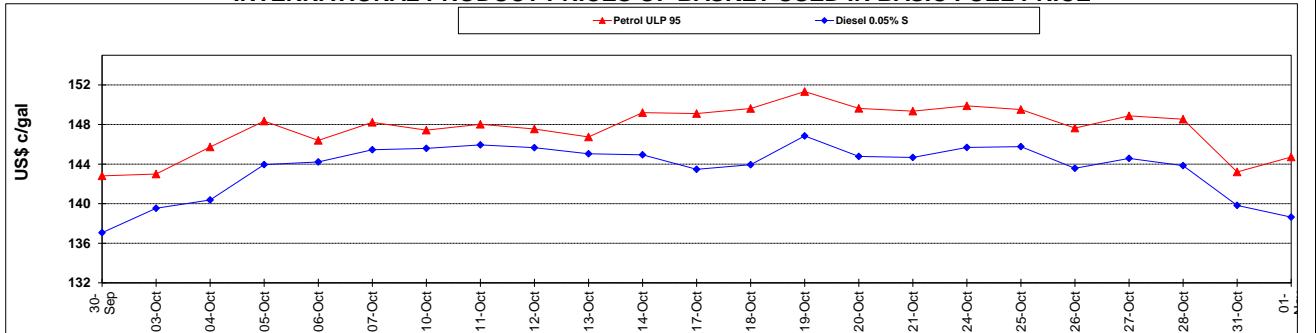
	PETROL 95	PETROL 93	DIESEL 0.05%	DIESEL 0.005%	ILL. PAR.
- MOVEMENT IN INTERNATIONAL PRODUCT PRICES	(29.130)	(28.665)	(47.388)	(48.413)	(40.555)
- MOVEMENT IN EXCHANGE RATE	10.671	10.361	10.387	10.471	10.306
AVERAGE UNIT OVER/(UNDER) RECOVERY 28/10/2016 - 01/11/2016	(18.459)	(18.304)	(37.001)	(37.942)	(30.249)

R/\$ EXCHANGE RATE - (R/\$ 13.5255- 01/11/2016)

EXCHANGE RATE USED IN BASIC FUEL PRICE



INTERNATIONAL PRODUCT PRICES OF BASKET USED IN BASIC FUEL PRICE



BASIC FUEL PRICE IN SA CENTS PER LITRE

