

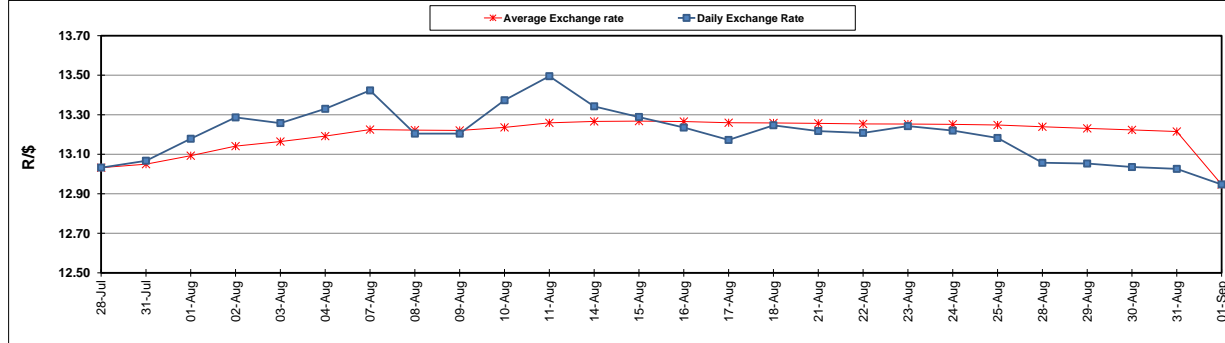
	PETROL 95 ULP	PETROL 93 ULP & LRP	DIESEL 0.05%	DIESEL 0.005%	ILL. PAR.
GAUTENG PUMP PRICE (SA c/l) AS FROM 06/09/2017	1 372.000	1 349.000	-	-	-
WHOLESALE PRICE (SA c/l) AS FROM 06/09/2017	-	-	1 170.330	1 175.730	732.088
SINGLE NATIONAL MAXIMUM RETAIL PRICE	-	-	-	-	941.000
BASIC FUEL PRICE - 01/09/2017 (SA c/l)	607.552	593.583	561.205	566.422	567.094
PRESS RELEASE CONTRIBUTION TO BFP 01/09/2017 - 01/09/2017 (SA c/l)	523.670	510.670	514.630	520.030	512.128
UNIT OVER/(UNDER) RECOVERY (SA c/l) - 01/09/2017	(83.882)	(82.913)	(46.575)	(46.392)	(54.966)
AVERAGE BASIC FUEL PRICE 01/09/2017 - 01/09/2017	607.552	593.583	561.205	566.422	567.094
AVERAGE UNIT OVER/(UNDER) RECOVERY 01/09/2017 - 01/09/2017	(83.882)	(82.913)	(46.575)	(46.392)	(54.966)

### ANALYSIS MOVEMENT OF AVERAGE OVER/(UNDER) RECOVERY

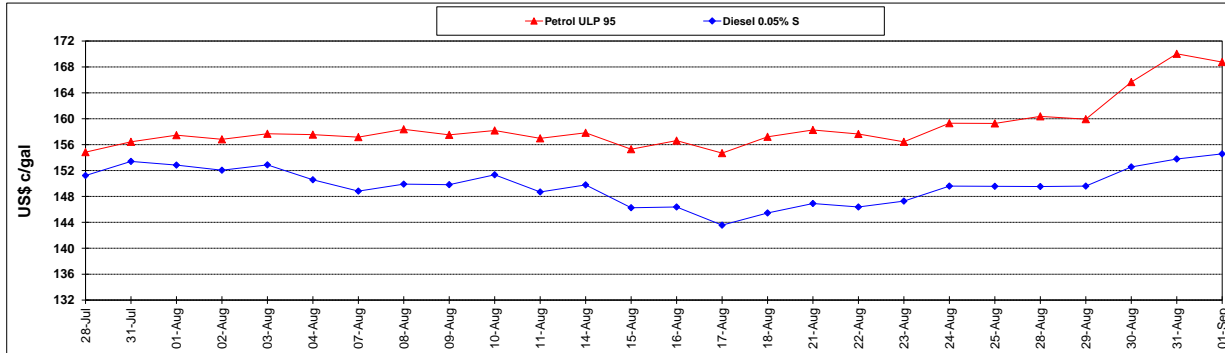
	PETROL 95	PETROL 93	DIESEL 0.05%	DIESEL 0.005%	ILL. PAR.
- MOVEMENT IN INTERNATIONAL PRODUCT PRICES	(96.468)	(95.209)	(58.200)	(58.126)	(66.713)
- MOVEMENT IN EXCHANGE RATE	12.586	12.296	11.625	11.734	11.747
AVERAGE UNIT OVER/(UNDER) RECOVERY 01/09/2017 - 01/09/2017	(83.882)	(82.913)	(46.575)	(46.392)	(54.966)

R/\$ EXCHANGE RATE - (R/\$ 12.9470 - 01/09/2017)

### EXCHANGE RATE USED IN BASIC FUEL PRICE



### INTERNATIONAL PRODUCT PRICES OF BASKET USED IN BASIC FUEL PRICE



### BASIC FUEL PRICE IN SA CENTS PER LITRE

