

UPDATE OF THE BASIC FUEL PRICE

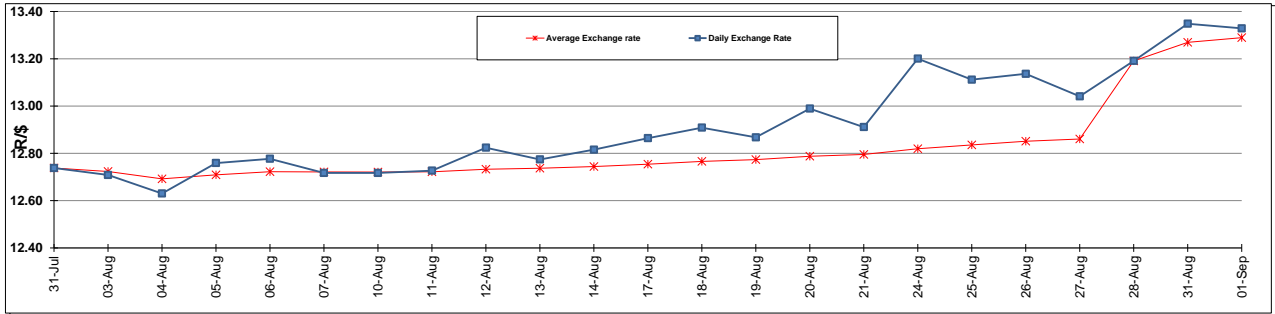
	PETROL 95 ULP	PETROL 93 ULP & LRP	DIESEL 0.05%	DIESEL 0.005%	ILL. PAR.
GAUTENG PUMP PRICE (SA c/l) AS FROM 02/09/2015	1,257.000	1,232.000	-	-	-
WHOLESALE PRICE (SA c/l) AS FROM 02/09/2015	-	-	1,040.970	1,049.370	661.828
SINGLE NATIONAL MAXIMUM RETAIL PRICE	-	-	-	-	847.000
BASIC FUEL PRICE - 01/09/2015 (SA c/l)	597.257	574.164	577.710	585.272	565.011
PRESS RELEASE CONTRIBUTION TO BFP 28/08/2015 - 01/09/2015 (SA c/l)	652.470	637.470	566.630	572.030	559.128
UNIT OVER/(UNDER) RECOVERY (SA c/l) - 01/09/2015	55.213	63.306	(11.080)	(13.242)	(5.883)
AVERAGE BASIC FUEL PRICE 28/08/2015 - 01/09/2015	581.925	558.534	561.739	569.360	550.576
AVERAGE UNIT OVER/(UNDER) RECOVERY 28/08/2015 - 01/09/2015	70.545	78.936	4.891	2.670	8.552

ANALYSIS MOVEMENT OF AVERAGE OVER/(UNDER) RECOVERY

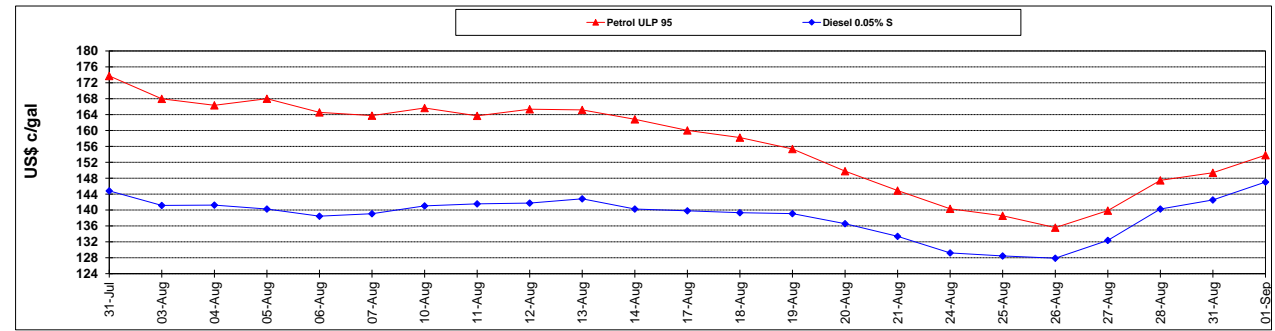
	PETROL 95	PETROL 93	DIESEL 0.05%	DIESEL 0.005%	ILL. PAR.
- MOVEMENT IN INTERNATIONAL PRODUCT PRICES	89.304	96.941	22.999	21.024	26.301
- MOVEMENT IN EXCHANGE RATE	(18.759)	(18.005)	(18.108)	(18.354)	(17.749)
AVERAGE UNIT OVER/(UNDER) RECOVERY 28/08/2015 - 01/09/2015	70.545	78.936	4.891	2.670	8.552

R/\$ EXCHANGE RATE - (R/\$ 13.3287 - 01/09/2015)

EXCHANGE RATE USED IN BASIC FUEL PRICE



INTERNATIONAL PRODUCT PRICES OF BASKET USED IN BASIC FUEL PRICE



BASIC FUEL PRICE IN SA CENTS PER LITRE

