

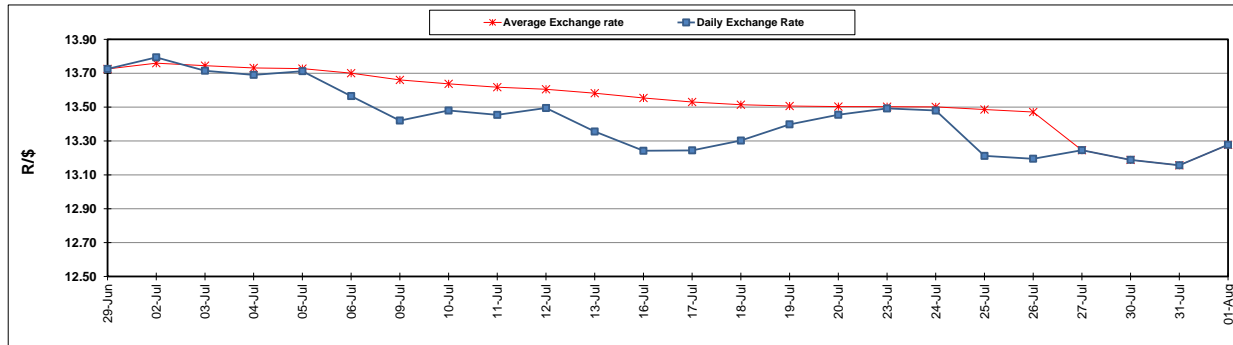
	PETROL 95 ULP	PETROL 93 ULP & LRP	DIESEL 0.05%	DIESEL 0.005%	ILL. PAR.
GAUTENG PUMP PRICE (SA c/l) AS FROM 01/08/2018	1 603.000	1 582.000	-	-	-
WHOLESALE PRICE (SA c/l) AS FROM 01/08/2018	-	-	1 440.830	1 445.230	953.088
SINGLE NATIONAL MAXIMUM RETAIL PRICE	-	-	-	-	1 233.000
BASIC FUEL PRICE - 01/08/2018 (SA c/l)	732.097	721.128	743.745	747.621	752.403
PRESS RELEASE CONTRIBUTION TO BFP 01/08/2018 - 01/08/2018 (SA c/l)	751.070	739.070	767.630	772.030	780.128
UNIT OVER/(UNDER) RECOVERY - 01/08/2018 (SA c/l)	18.973	17.942	23.885	24.409	27.725
AVERAGE BASIC FUEL PRICE 27/07/2018 - 01/08/2018	744.932	732.595	753.814	758.033	764.153
AVERAGE UNIT OVER/(UNDER) RECOVERY 27/06/2018 - 01/08/2018	5.388	5.725	16.816	16.998	12.975

ANALYSIS MOVEMENT OF AVERAGE OVER/(UNDER) RECOVERY

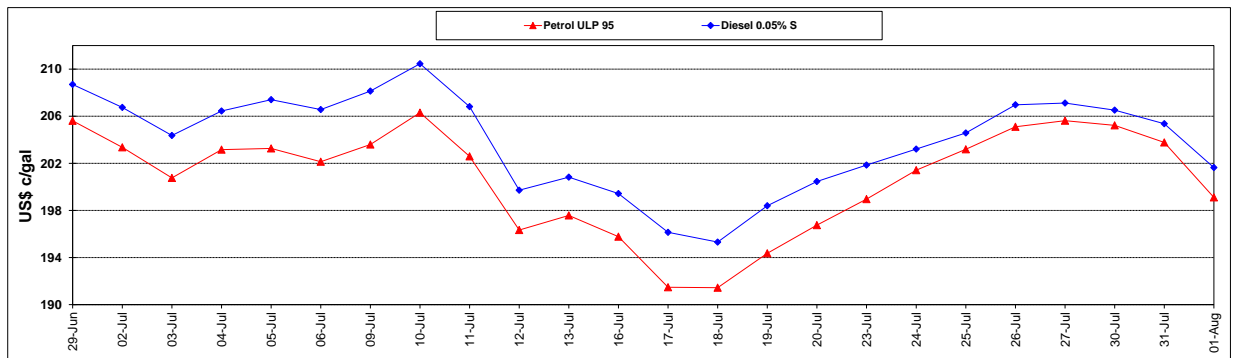
	PETROL 95	PETROL 93	DIESEL 0.05%	DIESEL 0.005%	ILL. PAR.
- MOVEMENT IN INTERNATIONAL PRODUCT PRICES	(8.939)	(8.365)	2.318	2.418	(1.722)
- MOVEMENT IN EXCHANGE RATE	14.327	14.090	14.498	14.579	14.697
AVERAGE UNIT OVER/(UNDER) RECOVERY 27/07/2018 - 01/08/2018	5.388	5.725	16.816	16.997	12.975

R/\$ EXCHANGE RATE - (R/\$13.2775 - 01/08/2018)

EXCHANGE RATE USED IN BASIC FUEL PRICE



INTERNATIONAL PRODUCT PRICES OF BASKET USED IN BASIC FUEL PRICE



BASIC FUEL PRICE IN SA CENTS PER LITRE

