

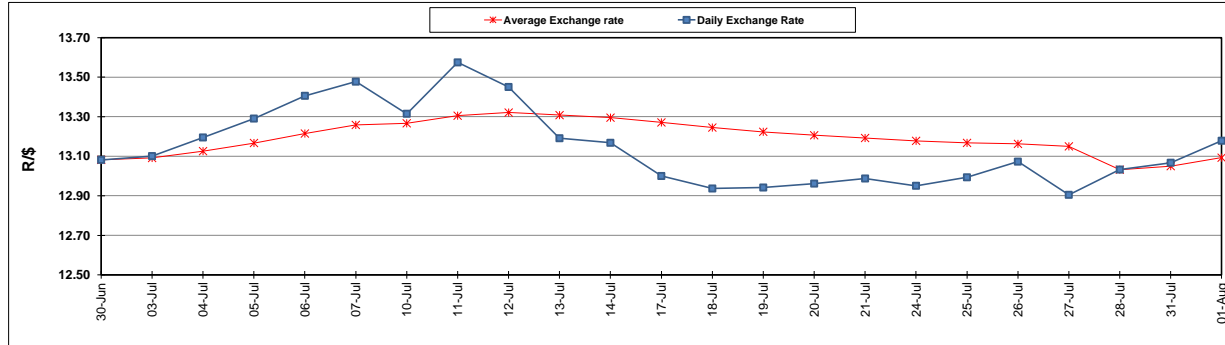
	PETROL 95 ULP	PETROL 93 ULP & LRP	DIESEL 0.05%	DIESEL 0.005%	ILL. PAR.
GAUTENG PUMP PRICE (SA c/l) AS FROM 02/08/2017	1 305.000	1 282.000	-	-	-
WHOLESALE PRICE (SA c/l) AS FROM 02/08/2017	-	-	1 126.330	1 131.730	683.088
SINGLE NATIONAL MAXIMUM RETAIL PRICE	-	-	-	-	876.000
BASIC FUEL PRICE - 01/08/2017 (SA c/l)	579.122	563.398	565.402	571.674	563.258
PRESS RELEASE CONTRIBUTION TO BFP 28/07/2017 - 01/08/2017 (SA c/l)	504.670	491.670	485.630	490.030	486.128
UNIT OVER/(UNDER) RECOVERY (SA c/l) - 01/08/2017	(74.452)	(71.728)	(79.772)	(81.644)	(77.130)
AVERAGE BASIC FUEL PRICE 28/07/2017 - 01/08/2017	570.930	555.771	560.272	566.568	557.463
AVERAGE UNIT OVER/(UNDER) RECOVERY 28/07/2017 - 01/08/2017	(66.260)	(64.101)	(74.642)	(76.538)	(71.335)

ANALYSIS MOVEMENT OF AVERAGE OVER/(UNDER) RECOVERY

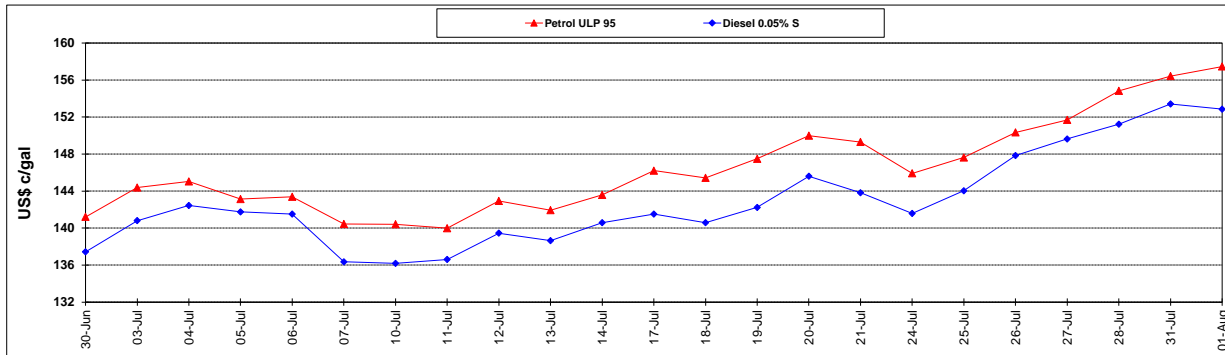
	PETROL 95	PETROL 93	DIESEL 0.05%	DIESEL 0.005%	ILL. PAR.
- MOVEMENT IN INTERNATIONAL PRODUCT PRICES	(68.759)	(66.533)	(77.094)	(79.018)	(73.775)
- MOVEMENT IN EXCHANGE RATE	2.499	2.432	2.452	2.480	2.440
AVERAGE UNIT OVER/(UNDER) RECOVERY 28/07/2017 - 01/08/2017	(66.260)	(64.101)	(74.642)	(76.538)	(71.335)

R/\$ EXCHANGE RATE - (R/\$ 13.1785 - 01/08/2017)

EXCHANGE RATE USED IN BASIC FUEL PRICE



INTERNATIONAL PRODUCT PRICES OF BASKET USED IN BASIC FUEL PRICE



BASIC FUEL PRICE IN SA CENTS PER LITRE

