

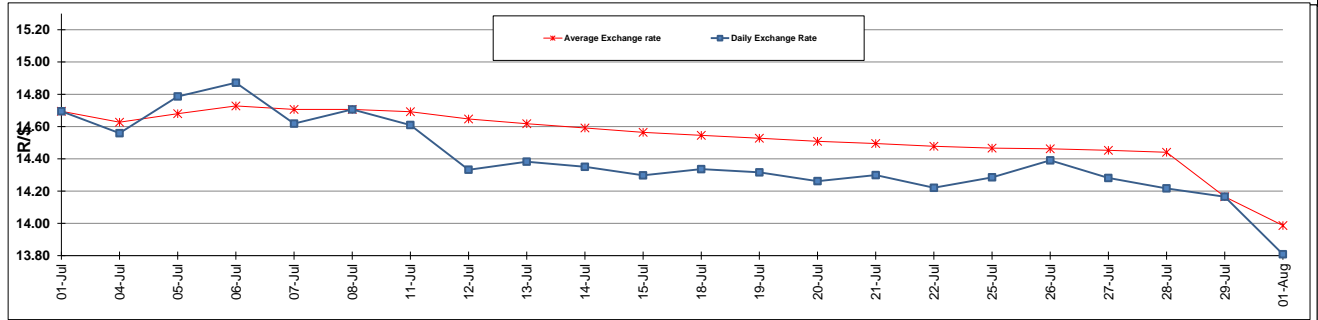
	PETROL 95 ULP	PETROL 93 ULP & LRP	DIESEL 0.05%	DIESEL 0.005%	ILL. PAR.
GAUTENG PUMP PRICE (SA c/l) AS FROM 03/08/2016	1 235.000	1 208.000	-	-	-
WHOLESALE PRICE (SA c/l) AS FROM 03/08/2016	-	-	1 096.870	1 101.270	694.628
SINGLE NATIONAL MAXIMUM RETAIL PRICE	-	-	-	-	891.000
BASIC FUEL PRICE - 01/08/2016 (SA c/l)	457.735	443.071	447.919	451.240	450.907
PRESS RELEASE CONTRIBUTION TO BFP 29/07/2116 - 01/08/2016 (SA c/l)	612.970	595.970	604.630	608.030	599.128
UNIT OVER/(UNDER) RECOVERY (SA c/l) - 01/08/2016	155.235	152.899	156.711	156.790	148.221
AVERAGE BASIC FUEL PRICE 29/07/2116 - 01/08/2016	462.679	447.526	456.701	460.100	459.881
AVERAGE UNIT OVER/(UNDER) RECOVERY 29/07/2116 - 01/08/2016	150.292	148.444	147.930	147.931	139.247

ANALYSIS MOVEMENT OF AVERAGE OVER/(UNDER) RECOVERY

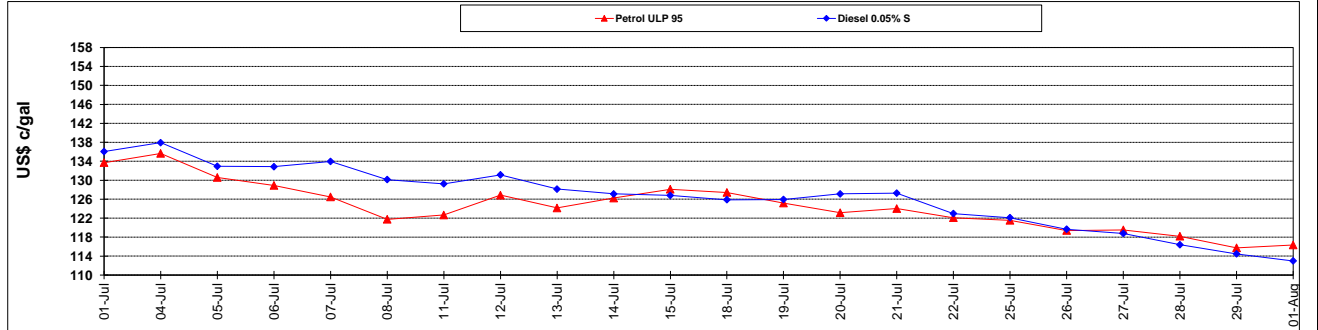
	PETROL 95	PETROL 93	DIESEL 0.05%	DIESEL 0.005%	ILL. PAR.
- MOVEMENT IN INTERNATIONAL PRODUCT PRICES	135.276	133.921	133.108	132.999	124.323
- MOVEMENT IN EXCHANGE RATE	15.015	14.523	14.821	14.931	14.924
AVERAGE UNIT OVER/(UNDER) RECOVERY 29/07/2016 - 01/08/2016	150.292	148.444	147.930	147.931	139.247

R/\$ EXCHANGE RATE - (R/\$ 13.8086 - 01/08/2016)

EXCHANGE RATE USED IN BASIC FUEL PRICE



INTERNATIONAL PRODUCT PRICES OF BASKET USED IN BASIC FUEL PRICE



BASIC FUEL PRICE IN SA CENTS PER LITRE

