

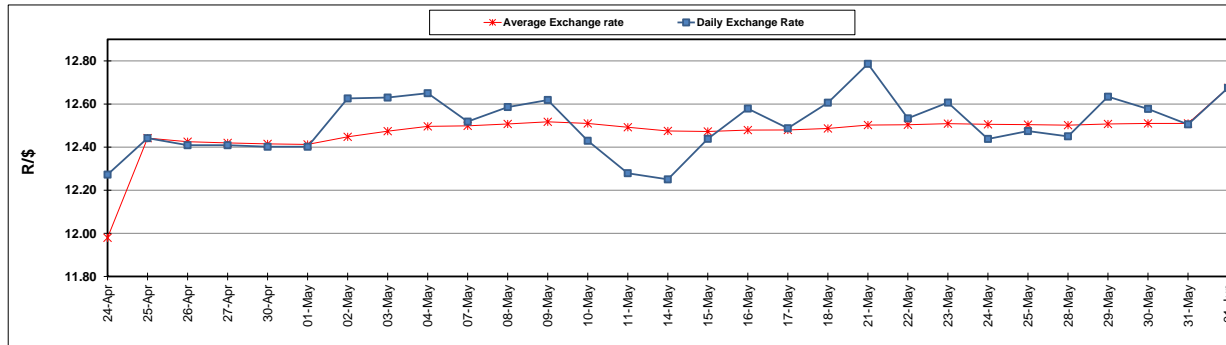
	PETROL 95 ULP	PETROL 93 ULP & LRP	DIESEL 0.05%	DIESEL 0.005%	ILL. PAR.
GAUTENG PUMP PRICE (SA c/l) AS FROM 06/06/2018	1 579.000	1 554.000	-	-	-
WHOLESALE PRICE (SA c/l) AS FROM 06/06/2018	-	-	1 418.830	1 425.230	927.088
SINGLE NATIONAL MAXIMUM RETAIL PRICE	-	-	-	-	1 198.000
BASIC FUEL PRICE - 01/06/2018 (SA c/l)	729.651	716.196	743.519	748.473	746.459
PRESS RELEASE CONTRIBUTION TO BFP 01/06/2018 - 01/06/2018 (SA c/l)	645.070	630.070	660.630	665.030	672.128
UNIT OVER/(UNDER) RECOVERY - 01/06/2018 (SA c/l)	(84.581)	(86.126)	(82.889)	(83.443)	(74.331)
AVERAGE BASIC FUEL PRICE 01/06/2018 - 01/06/2018	729.651	716.196	743.519	748.473	746.459
AVERAGE UNIT OVER/(UNDER) RECOVERY 01/06/2018 - 01/06/2018	(84.581)	(86.126)	(82.889)	(83.443)	(74.331)

ANALYSIS MOVEMENT OF AVERAGE OVER/(UNDER) RECOVERY

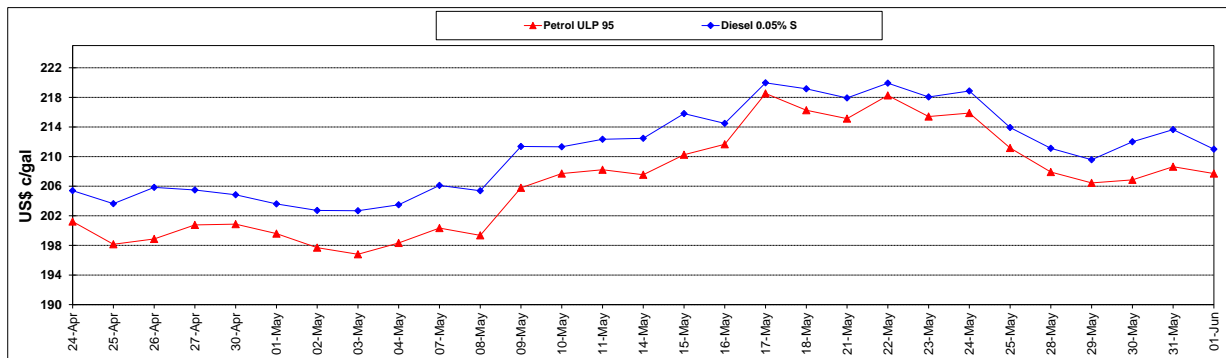
	PETROL 95	PETROL 93	DIESEL 0.05%	DIESEL 0.005%	ILL. PAR.
- MOVEMENT IN INTERNATIONAL PRODUCT PRICES	(75.088)	(76.808)	(73.216)	(73.705)	(64.620)
- MOVEMENT IN EXCHANGE RATE	(9.493)	(9.318)	(9.673)	(9.738)	(9.711)
AVERAGE UNIT OVER/(UNDER) RECOVERY 01/06/2018 - 01/06/2018	(84.581)	(86.126)	(82.889)	(83.443)	(74.331)

R/\$ EXCHANGE RATE - (R/\$12.6748 - 01/06/2018)

EXCHANGE RATE USED IN BASIC FUEL PRICE



INTERNATIONAL PRODUCT PRICES OF BASKET USED IN BASIC FUEL PRICE



BASIC FUEL PRICE IN SA CENTS PER LITRE

