

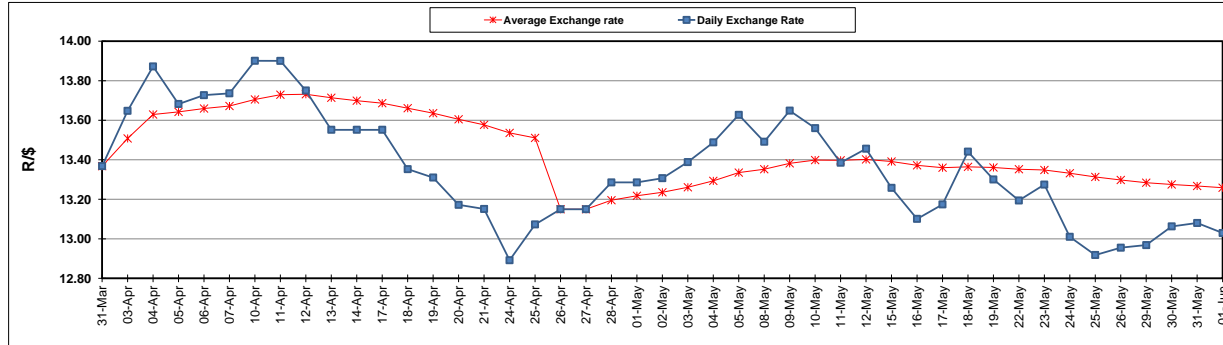
	PETROL 95 ULP	PETROL 93 ULP & LRP	DIESEL 0.05%	DIESEL 0.005%	ILL. PAR.
GAUTENG PUMP PRICE (SA c/l) AS FROM 03/05/2017	1 379.000	1 357.000	-	-	-
WHOLESALE PRICE (SA c/l) AS FROM 03/05/2017	-	-	1 180.330	1 184.730	736.088
SINGLE NATIONAL MAXIMUM RETAIL PRICE	-	-	-	-	947.000
BASIC FUEL PRICE - 01/06/2017 (SA c/l)	555.688	542.669	523.975	527.675	527.155
PRESS RELEASE CONTRIBUTION TO BFP 03/05/2017 - 01/06/2017 (SA c/l)	597.670	585.670	568.630	573.030	565.128
UNIT OVER/(UNDER) RECOVERY (SA c/l) - 01/06/2017	41.982	43.001	44.655	45.355	37.973
AVERAGE BASIC FUEL PRICE 26/04/2017 - 01/06/2017	564.066	548.463	540.569	544.151	536.908
AVERAGE UNIT OVER/(UNDER) RECOVERY 26/04/2017 - 01/06/2017	24.530	28.133	22.505	22.953	21.924

ANALYSIS MOVEMENT OF AVERAGE OVER/(UNDER) RECOVERY

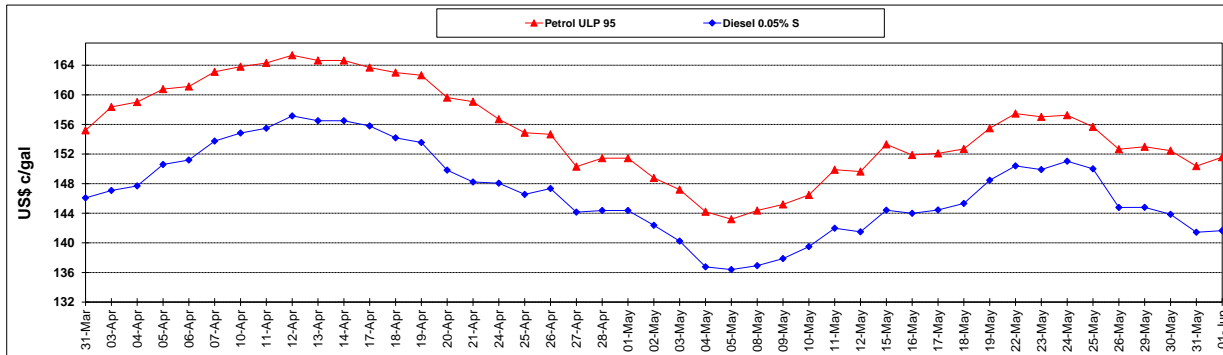
	PETROL 95	PETROL 93	DIESEL 0.05%	DIESEL 0.005%	ILL. PAR.
- MOVEMENT IN INTERNATIONAL PRODUCT PRICES	13.818	17.717	12.239	12.619	11.727
- MOVEMENT IN EXCHANGE RATE	10.712	10.416	10.266	10.334	10.197
AVERAGE UNIT OVER/(UNDER) RECOVERY 26/04/2017 - 01/06/2017	24.530	28.133	22.505	22.953	21.924

R/\$ EXCHANGE RATE - (R/\$ 13.0293 - 01/06/2017)

EXCHANGE RATE USED IN BASIC FUEL PRICE



INTERNATIONAL PRODUCT PRICES OF BASKET USED IN BASIC FUEL PRICE



BASIC FUEL PRICE IN SA CENTS PER LITRE

