

## UPDATE OF THE BASIC FUEL PRICE

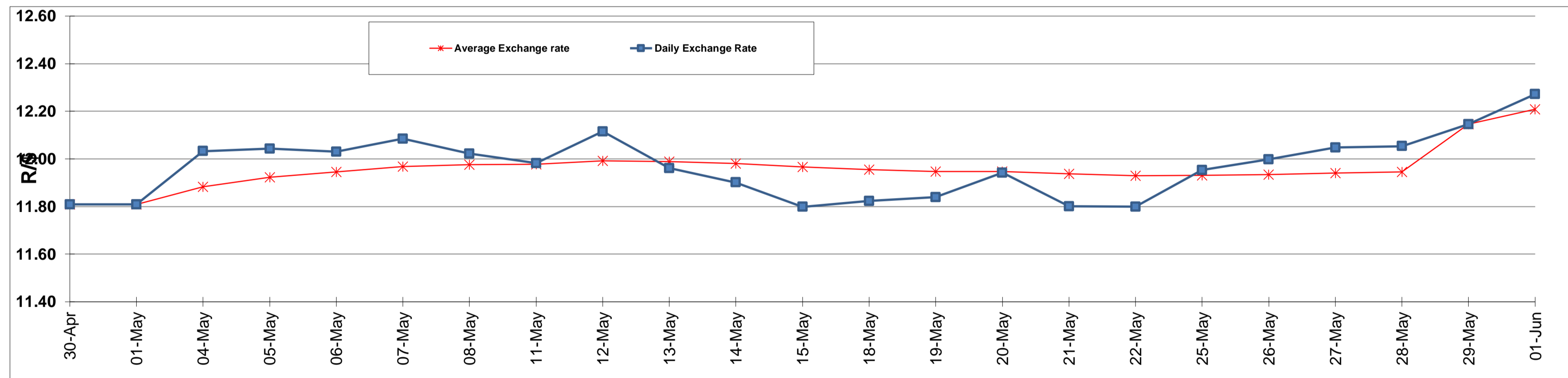
	PETROL 95 ULP	PETROL 93 ULP & LRP	DIESEL 0.05%	DIESEL 0.005%	ILL. PAR.
GAUTENG PUMP PRICE (SA c/l) AS FROM 03/06/2015	1,336.000	1,308.000	-	-	-
WHOLESALE PRICE (SA c/l) AS FROM 03/06/2015	-	-	1,166.790	1,170.190	780.828
SINGLE NATIONAL MAXIMUM RETAIL PRICE	-	-	-	-	1,006.000
BASIC FUEL PRICE - 01/06/2015 (SA c/l)	684.115	670.563	640.514	643.363	625.010
PRESS RELEASE CONTRIBUTION TO BFP 29/05/2015 - 01/06/2015 (SA c/l)	615.650	597.650	589.630	596.030	581.128
UNIT OVER/(UNDER) RECOVERY (SA c/l) - 01/06/2015	(68.465)	(72.913)	(50.884)	(47.333)	(43.882)
AVERAGE BASIC FUEL PRICE 29/05/2015 - 01/06/2015	681.086	667.609	638.257	640.945	621.344
AVERAGE UNIT OVER/(UNDER) RECOVERY 29/05/2015 - 01/06/2015	(65.436)	(69.959)	(48.627)	(44.915)	(40.216)

### ANALYSIS MOVEMENT OF AVERAGE OVER/(UNDER) RECOVERY

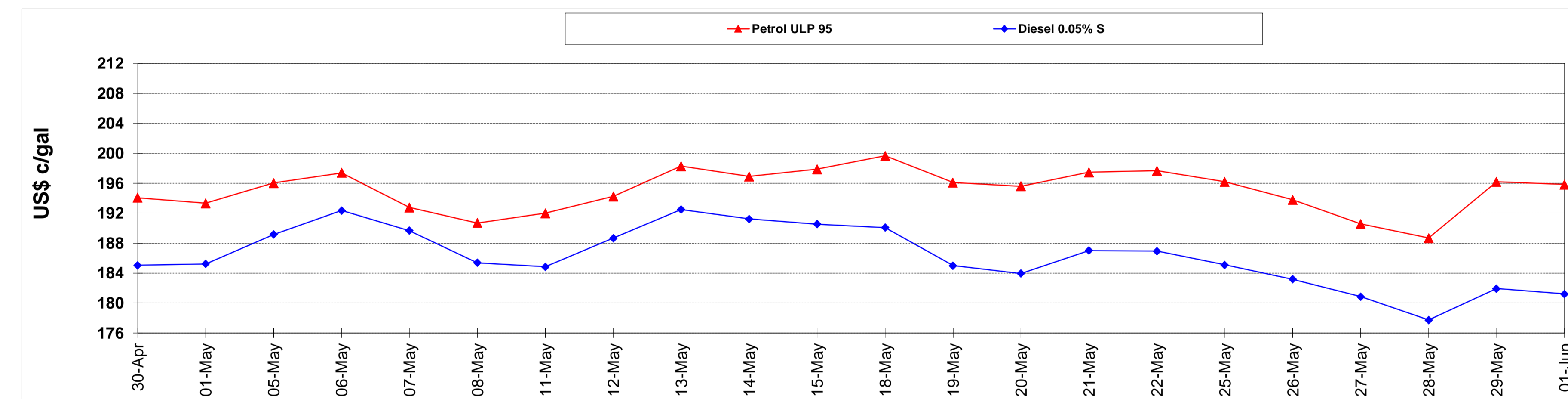
	PETROL 95	PETROL 93	DIESEL 0.05%	DIESEL 0.005%	ILL. PAR.
- MOVEMENT IN INTERNATIONAL PRODUCT PRICES	(50.736)	(55.550)	(34.852)	(31.082)	(26.806)
- MOVEMENT IN EXCHANGE RATE	(14.700)	(14.409)	(13.775)	(13.833)	(13.410)
AVERAGE UNIT OVER/(UNDER) RECOVERY 29/05/2015 - 01/06/2015	(65.436)	(69.959)	(48.627)	(44.915)	(40.216)

**R/\$ EXCHANGE RATE - (R/\$ 12.2720 - 01/06/2015)**

### EXCHANGE RATE USED IN BASIC FUEL PRICE



### INTERNATIONAL PRODUCT PRICES OF BASKET USED IN BASIC FUEL PRICE



### BASIC FUEL PRICE IN SA CENTS PER LITRE

