

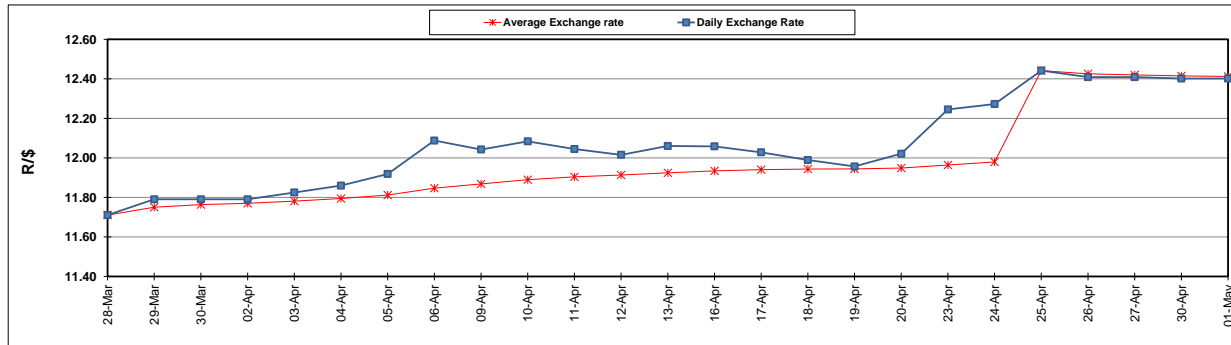
	PETROL 95 ULP	PETROL 93 ULP & LRP	DIESEL 0.05%	DIESEL 0.005%	ILL. PAR.
GAUTENG PUMP PRICE (SA c/l) AS FROM 02/05/2018	1 497.000	1 472.000	-	-	-
WHOLESALE PRICE (SA c/l) AS FROM 02/05/2018	-	-	1 333.830	1 338.230	845.088
SINGLE NATIONAL MAXIMUM RETAIL PRICE	-	-	-	-	1 089.000
BASIC FUEL PRICE - 01/05/2018 (SA c/l)	688.689	673.421	704.755	710.328	718.817
PRESS RELEASE CONTRIBUTION TO BFP 25/04/2018 - 01/05/2018 (SA c/l)	596.070	581.070	601.630	607.030	620.128
UNIT OVER/(UNDER) RECOVERY - 01/05/2018 (SA c/l)	(92.619)	(92.351)	(103.125)	(103.298)	(98.689)
AVERAGE BASIC FUEL PRICE 25/04/2018 - 01/05/2018	690.758	675.692	710.286	715.347	725.989
AVERAGE UNIT OVER/(UNDER) RECOVERY 25/04/2018 - 01/05/2018	(94.688)	(94.622)	(108.656)	(108.317)	(105.861)

### ANALYSIS MOVEMENT OF AVERAGE OVER/(UNDER) RECOVERY

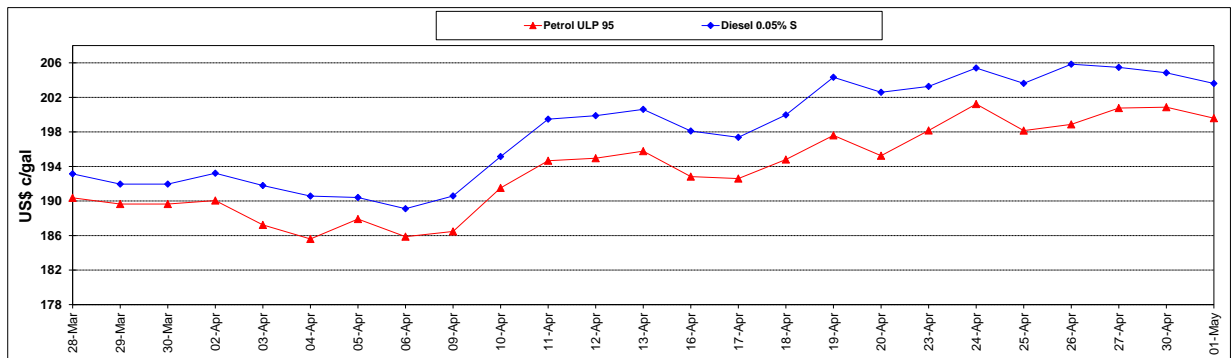
	PETROL 95	PETROL 93	DIESEL 0.05%	DIESEL 0.005%	ILL. PAR.
- MOVEMENT IN INTERNATIONAL PRODUCT PRICES	(70.597)	(71.057)	(83.884)	(83.369)	(80.542)
- MOVEMENT IN EXCHANGE RATE	(24.091)	(23.565)	(24.772)	(24.948)	(25.319)
AVERAGE UNIT OVER/(UNDER) RECOVERY 25/04/2018 - 01/05/2018	(94.688)	(94.622)	(108.656)	(108.317)	(105.861)

### R/\$ EXCHANGE RATE - (R/\$12.4018 - 01/05/2018)

#### EXCHANGE RATE USED IN BASIC FUEL PRICE



#### INTERNATIONAL PRODUCT PRICES OF BASKET USED IN BASIC FUEL PRICE



#### BASIC FUEL PRICE IN SA CENTS PER LITRE

