

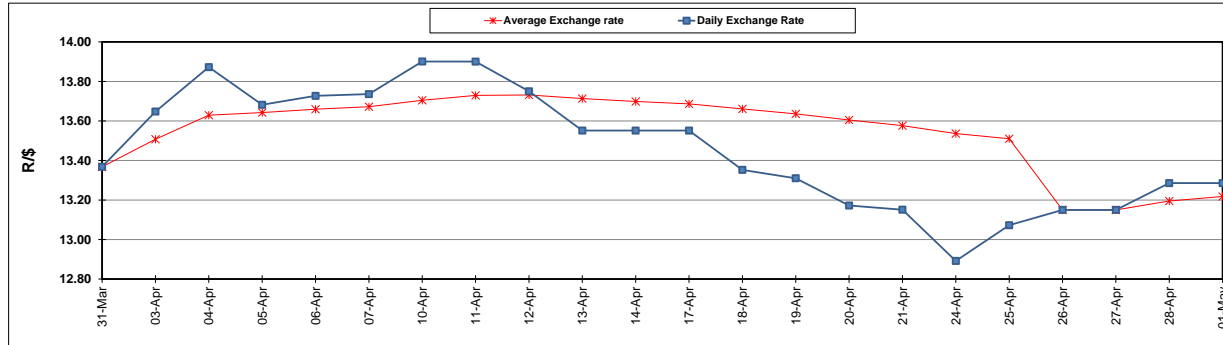
	PETROL 95 ULP	PETROL 93 ULP & LRP	DIESEL 0.05%	DIESEL 0.005%	ILL. PAR.
GAUTENG PUMP PRICE (SA c/l) AS FROM 03/05/2017	1,379.000	1,357.000	-	-	-
WHOLESALE PRICE (SA c/l) AS FROM 03/05/2017	-	-	1,180.330	1,184.730	736.088
SINGLE NATIONAL MAXIMUM RETAIL PRICE	-	-	-	-	947.000
BASIC FUEL PRICE - 01/05/2017 (SA c/l)	564.195	548.114	541.826	545.894	534.940
PRESS RELEASE CONTRIBUTION TO BFP 26/04/2017 - 01/05/2017 (SA c/l)	548.670	536.670	538.630	541.030	531.128
UNIT OVER/(UNDER) RECOVERY (SA c/l) - 01/05/2017	(15.525)	(11.444)	(3.196)	(4.864)	(3.812)
AVERAGE BASIC FUEL PRICE 26/04/2017 - 01/05/2017	563.168	546.993	541.507	545.806	534.498
AVERAGE UNIT OVER/(UNDER) RECOVERY 26/04/2017- 01/05/2017	(14.498)	(10.323)	(2.877)	(4.776)	(3.370)

ANALYSIS MOVEMENT OF AVERAGE OVER/(UNDER) RECOVERY

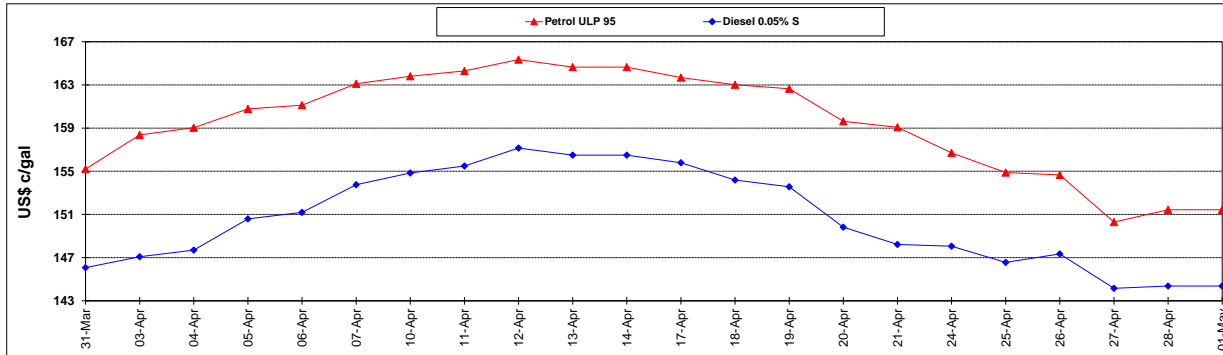
	PETROL 95	PETROL 93	DIESEL 0.05%	DIESEL 0.005%	ILL. PAR.
- MOVEMENT IN INTERNATIONAL PRODUCT PRICES	(26.973)	(22.440)	(14.873)	(16.867)	(15.210)
- MOVEMENT IN EXCHANGE RATE	12.475	12.117	11.996	12.091	11.840
AVERAGE UNIT OVER/(UNDER) RECOVERY 26/04/2017 - 01/05/2017	(14.498)	(10.323)	(2.877)	(4.776)	(3.370)

R/\$ EXCHANGE RATE - (R/\$ 13.2855 - 01/05/2017)

EXCHANGE RATE USED IN BASIC FUEL PRICE



INTERNATIONAL PRODUCT PRICES OF BASKET USED IN BASIC FUEL PRICE



BASIC FUEL PRICE IN SA CENTS PER LITRE

