

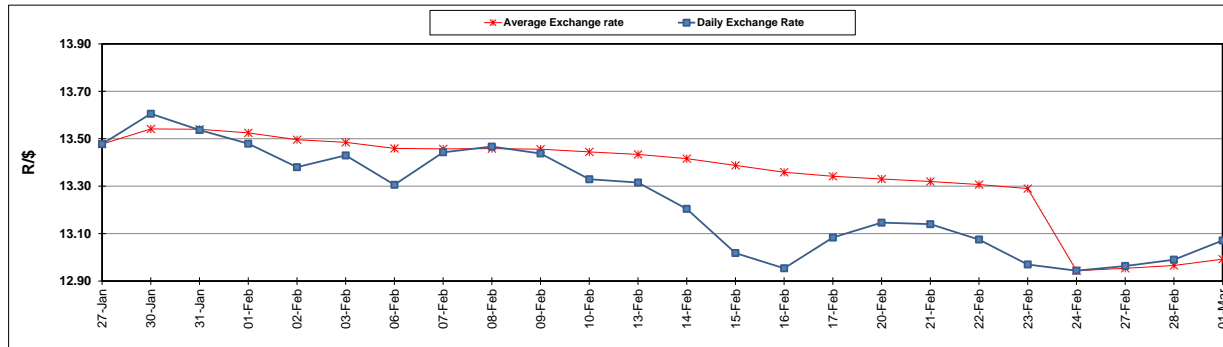
|  | PETROL 95<br>ULP | PETROL 93<br>ULP & LRP | DIESEL<br>0.05% | DIESEL<br>0.005% | ILL. PAR. |
|--|------------------|------------------------|-----------------|------------------|-----------|
| GAUTENG PUMP PRICE (SA c/l) AS FROM 01/03/2017                     | 1 354.000        | 1 330.000              | -               | -                | -         |
| WHOLESALE PRICE (SA c/l) AS FROM 01/03/2017                        | -                | -                      | 1 160.830       | 1 163.230        | 750.588   |
| SINGLE NATIONAL MAXIMUM RETAIL PRICE                               | -                | -                      | -               | -                | 966.000   |
| BASIC FUEL PRICE - 01/03/2017 (SA c/l)                             | 579.208          | 568.354                | 579.961         | 583.157          | 570.117   |
| PRESS RELEASE CONTRIBUTION TO BFP 24/02/2017 - 01/03/2017 (SA c/l) | 612.870          | 598.870                | 588.630         | 591.030          | 583.128   |
| UNIT OVER/(UNDER) RECOVERY (SA c/l) - 01/03/2017                   | 33.662           | 30.516                 | 8.669           | 7.873            | 13.011    |
| AVERAGE BASIC FUEL PRICE 24/02/2017 - 01/03/2017                   | 581.978          | 570.632                | 575.637         | 578.732          | 568.699   |
| AVERAGE UNIT OVER/(UNDER) RECOVERY 24/02/2017- 01/03/2017          | 36.892           | 34.239                 | 14.493          | 13.799           | 20.430    |

### ANALYSIS MOVEMENT OF AVERAGE OVER/(UNDER) RECOVERY

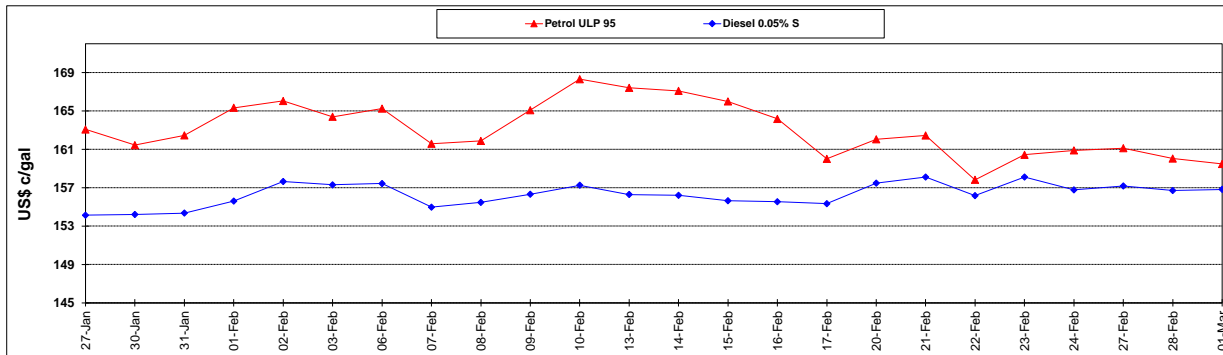
|  | PETROL 95 | PETROL 93 | DIESEL 0.05% | DIESEL 0.005% | ILL. PAR. |
|--|-----------|-----------|--------------|---------------|-----------|
| - MOVEMENT IN INTERNATIONAL PRODUCT PRICES                 | 37.882    | 35.209    | 15.472       | 14.782        | 21.396    |
| - MOVEMENT IN EXCHANGE RATE                                | (0.990)   | (0.971)   | (0.979)      | (0.984)       | (0.967)   |
| AVERAGE UNIT OVER/(UNDER) RECOVERY 24/02/2017 - 01/03/2017 | 36.892    | 34.239    | 14.493       | 13.799        | 20.430    |

R/\$ EXCHANGE RATE - (R/\$ 13.0710 - 01/03/2017)

### EXCHANGE RATE USED IN BASIC FUEL PRICE



### INTERNATIONAL PRODUCT PRICES OF BASKET USED IN BASIC FUEL PRICE



### BASIC FUEL PRICE IN SA CENTS PER LITRE

