

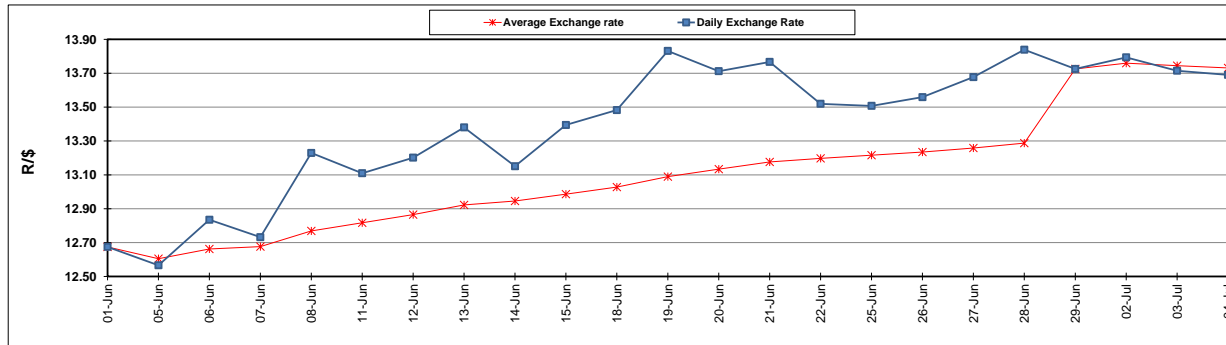
	PETROL 95 ULP	PETROL 93 ULP & LRP	DIESEL 0.05%	DIESEL 0.005%	ILL. PAR.
GAUTENG PUMP PRICE (SA c/l) AS FROM 04/07/2018	1 602.000	1 581.000	-	-	-
WHOLESALE PRICE (SA c/l) AS FROM 04/07/2018	-	-	1 444.830	1 449.230	949.088
SINGLE NATIONAL MAXIMUM RETAIL PRICE	-	-	-	-	1 228.000
BASIC FUEL PRICE - 04/07/2018 (SA c/l)	770.369	759.292	785.274	790.141	799.751
PRESS RELEASE CONTRIBUTION TO BFP 04/07/2018 - 04/07/2018 (SA c/l)	750.070	739.070	771.630	776.030	776.128
UNIT OVER/(UNDER) RECOVERY - 04/07/2018 (SA c/l)	(20.299)	(20.222)	(13.644)	(14.111)	(23.623)
AVERAGE BASIC FUEL PRICE 29/06/2018 - 04/07/2018	772.987	762.067	788.150	792.948	801.087
AVERAGE UNIT OVER/(UNDER) RECOVERY 29/06/2018 - 04/07/2018	(40.167)	(43.247)	(36.020)	(34.918)	(41.459)

ANALYSIS MOVEMENT OF AVERAGE OVER/(UNDER) RECOVERY

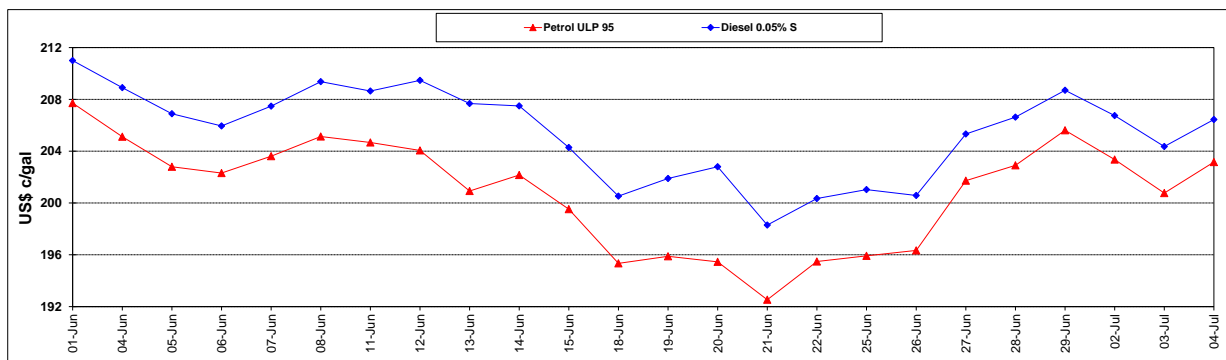
	PETROL 95	PETROL 93	DIESEL 0.05%	DIESEL 0.005%	ILL. PAR.
- MOVEMENT IN INTERNATIONAL PRODUCT PRICES	(15.183)	(18.616)	(10.546)	(9.289)	(15.567)
- MOVEMENT IN EXCHANGE RATE	(24.984)	(24.631)	(25.474)	(25.629)	(25.892)
AVERAGE UNIT OVER/(UNDER) RECOVERY 29/06/2018 - 04/07/2018	(40.167)	(43.247)	(36.020)	(34.918)	(41.459)

R/\$ EXCHANGE RATE - (R/\$13.6903 - 04/07/2018)

EXCHANGE RATE USED IN BASIC FUEL PRICE



INTERNATIONAL PRODUCT PRICES OF BASKET USED IN BASIC FUEL PRICE



BASIC FUEL PRICE IN SA CENTS PER LITRE

